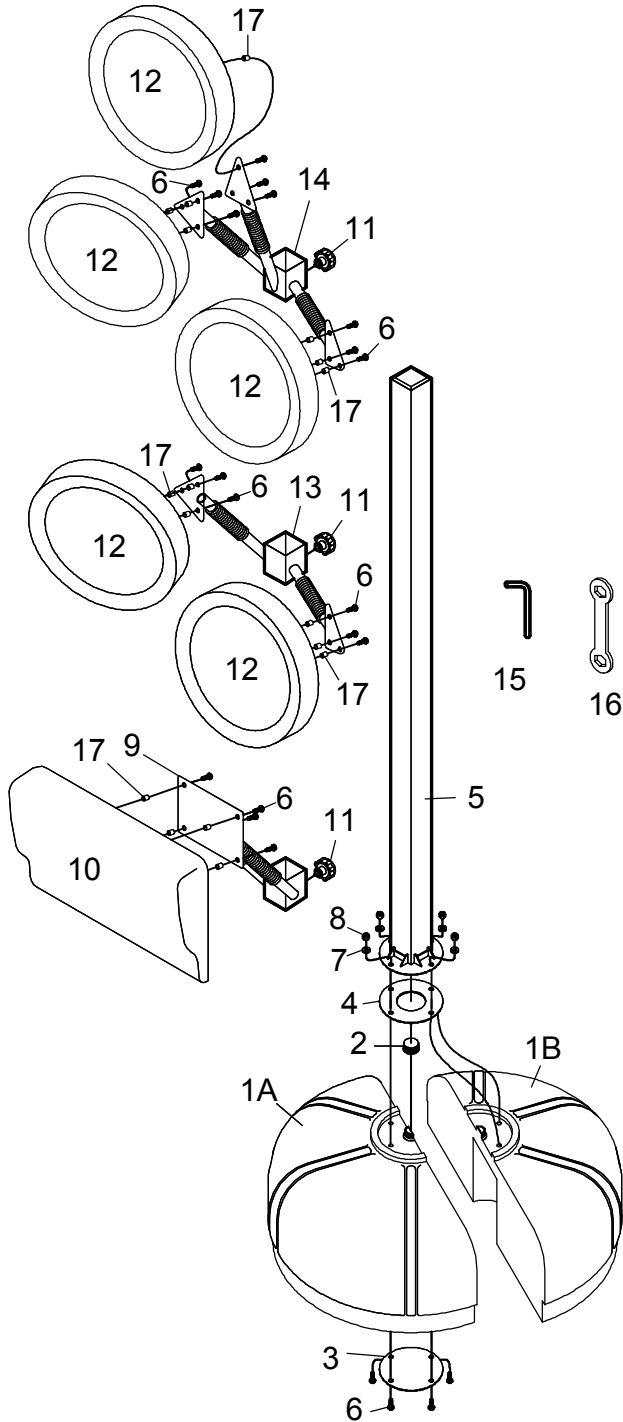


OVERVIEW CHART



PARTS LIST

No.	Description	Q'ty	No.	Description	Q'ty
1A	Base	1	9	Rectangle Arm Support	1
1B	Base	1	10	Rectangle Pad	1
2	Cap	1	11	Lock Knob	3
3	Spacer Plate	1	12	Round Pad	5
4	Rubber Disc	1	13	Double Arm Support	1
5	Main Beam	1	14	Three-way Arm Support	1
6	Bolt	19	15	Allen Wrench	1
7	Flat Washer	4	16	Spanner	1
8	Nylon Nut	4	17	Spacer	19

ASSEMBLE & INSTRUCTIONS

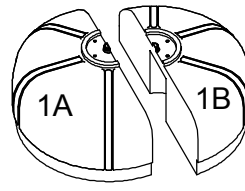


Figure A

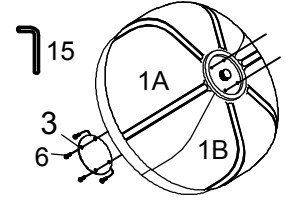


Figure B

STEP 1.

Attach all parts on the floor, Fix the Base (1A & 1B) first as shown Figure A.

And then assemble the Spacer plate (3) to connect into the bottom of the Base with four Bolts (6) see Figure B. For this assembly step use an Allen Wrench (15).

You can tilt BASE slightly before assembling.

Now make sure you want to lock these bolts before proceeding to the next assembly step.

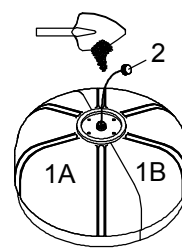
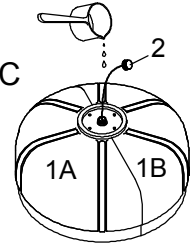


Figure C



STEP 2.

Injecting Water or Sand into the Base (1A & 1B). Re-close the Cap (2) to the BASE as shown in Figure C.

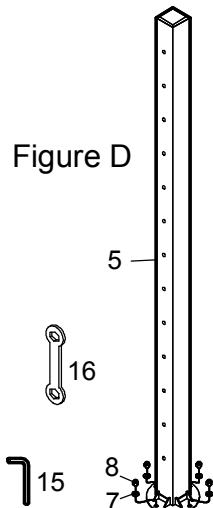


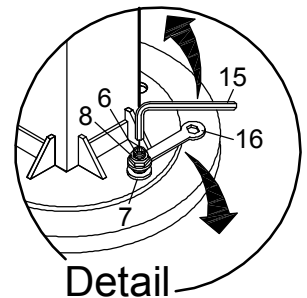
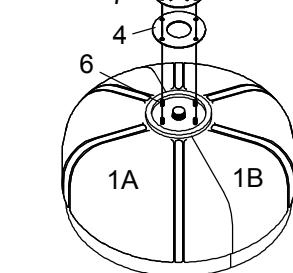
Figure D

STEP 3.

Assemble the Main Beam (5) and Base (1A & 1B). Slide the Big Washer (3) to bottom for the Base (1A & 1B), and Rubber Disc (4) top from the Base, Fix the bracket of the Main Beam (5) between with four Bolts (6), Flat Washers (7) and Nylon Nuts (8) see Figure 4.

Step with the Allen Wrench (15) to tighten, Spanner (16) to Prevents slipping during assembly.

Please make sure tighten all bolts, nuts and parts as shown in Detail.



Detail