

**SPEEDIANCE**

# **GYM MONSTER 2**

Interactive Multi-Media Digital Fitness Equipment

**Product manual**



Strength Training, Now at a New Level.

OWN IT.

# Safety Warnings



Keep away from flammable materials



Do not use in damp areas



Away away from open flames



Not suitable for children



Do not use poor-quality power supplies



Ground required



Professional service required

**[Warning]** Before using or operating this product, please read and comply with the following precautions to ensure optimal performance and prevent hazardous or unlawful situations.

1. This product emits radio waves and contains magnets that may impair the operation of implanted or personal medical devices such as pacemakers, cochlear implants or hearing aids.

If you use such medical devices, please consult the manufacturer for any restrictions that may apply to the use of this product.

2. When using this product, maintain a distance of at least 15cm from implanted medical devices (such as pacemakers and cochlear implants).

3. Emergency procedures in the event of a gas leak: In the event of a gas leak, immediately close the gas supply valve and quickly open doors and windows to ventilate the room.

Do not unplug this product or any other electrical appliances, as this may generate sparks that could cause an explosion or fire.

4. Risk of electric shock: Always unplug the power supply before performing any cleaning or maintenance work. Do not spray or rinse the product with water or place it in damp or splash-prone environments, as this may cause an electric shock or damage the product.

5. Child safety: This product is not a toy. Do not allow children to approach or use the product without supervision. To prevent accidents, do not allow children to pull on cables, touch mechanical parts or operate the power switch.

6. Battery safety (risk of ingestion!): This product contains button cells or small batteries. Do not swallow the batteries—risk of chemical burns!

7. Dispose of batteries in accordance with local regulations. Do not place them in household waste. Improper disposal may cause an explosion or pollute the environment.

8. Power cord and connection: Use the original power cord supplied with the product. Do not use the power cord for other appliances. Ensure that the plug is fully inserted and the socket is properly grounded; failure to do so may cause a fire. When unplugging the product, hold the plug firmly and pull it out from the wall socket. Do not pull on the power cord.

9. Power cord and product status: Do not use the power cord if the cord is damaged or the plug is worn. Do not disassemble or modify the product or tamper with its internal electronic components (such as circuit boards).

All repairs must be carried out by authorized or qualified service personnel. In the event of a malfunction, please contact Speediance Customer Service.

10. Power supply specifications: This product uses a 110–230V, 50/60Hz AC power supply. Warning: If the input voltage exceeds 230V (especially at voltages above 260V), the product may malfunction or be damaged.

11. Restart interval: After a power outage or cleaning, unplug the power supply and wait at least 30 seconds before plugging it back in to prevent damage to the motor or electronic components from repeated startups.

12. Placement: The product must be placed on a sturdy, level surface. To ensure proper ventilation and safe operation, make sure that there are no obstacles above or either side of the product, and maintain a clearance of at least 10cm from any walls to the rear.

13. Maneuvering: The casters are intended only for movement on level surfaces. Do not use the casters to move the product on stairs, slopes or uneven surfaces.

14. Temperature range: Use this product at an ambient temperature of 0°C to 40°C. Store the product at a temperature of -20°C to +50°C.

15. Before using the product, make sure that the secure handle is locked in position.

16. Prohibited items: Do not place, use or spill flammable/explosive/highly corrosive substances, liquids or other combustible materials on or near the product, as these may cause a fire or damage the product.

17. Before first use, remove all packaging materials, including the outer carton, foam, tape and plastic bags. If the product is covered with a protective film, peel it off before use.

After turning on the product, allow it to run idle for 5–10 minutes. Carefully inspect the exterior for signs of damage and check for any abnormal noises. In the event of any abnormalities, switch off the power supply immediately and contact Speediance Customer Service.

18. Before each use, make sure that the product is positioned securely (the platform should be completely level) and that the surroundings comply with requirements. (See 10, 11, 12 and 13). Check whether the connectors, secure handle and adjustable pulley holder are loose or abnormal, and check that the connectors and accessories are securely connected. In the event of any abnormalities, do not use the product and contact Speediance Customer Service for assistance.

19. Placement of objects: Do not place any objects on the product other than those expressly recommended by the manufacturer.

20. Product status: After use, make sure that the product is turned off or in standby mode.

21. Risk of trapped fingers: Be aware of narrow gaps on the product during operation. To avoid injury, do not insert your fingers into the gaps.

22. Use of accessories: After using accessories with moving parts or weights, return them to their original position slowly to prevent pinching or impact injuries.

(Accessories include cables, Speediance Tricep Rope, Speediance Ankle Straps, Speediance handles, hooks, Speediance Adjustable Barbell, Speediance Bluetooth ring, bench, Speediance Skiing Handles, Speediance PowerGrip and angle adapter, but exclude complimentary gifts).

23. Platform safety: When folding the platform, ensure that it is fully folded and locked in place to prevent it from accidentally dropping out of position and causing injury or damage.

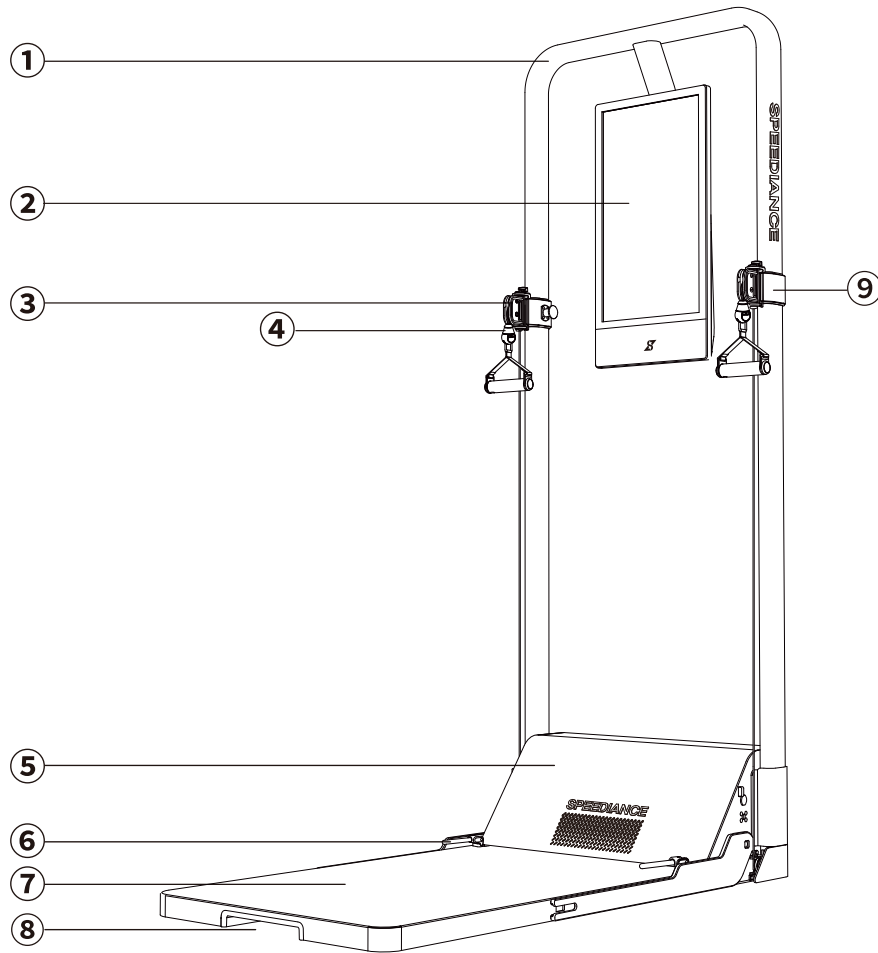
24. Disposal: When the product has reached the end of its life, promptly dispose of it at a designated recycling point and keep it out of the reach of children to prevent accidents.

25. Check the product regularly for signs of rust, corrosion or excessive wear. Inspect all bolts and screws for signs of rust or damage.

26. After powering on, double check that the surrounding environment meets the requirements for use (in particular, there should be no flammable materials, the room should be well ventilated and the product should be placed on a level surface).

27. After completing the above checks, you can proceed to use the product.

# Product Diagram



- |                            |                            |
|----------------------------|----------------------------|
| ① Main Frame               | ⑤ Motor Compartment Cover  |
| ② Touchscreen              | ⑥ Secure Handle            |
| ③ Detachable Pulley System | ⑦ Platform                 |
| ④ Ball-shaped Connector    | ⑧ Finger Groove            |
|                            | ⑨ Adjustable Pulley Holder |

EN

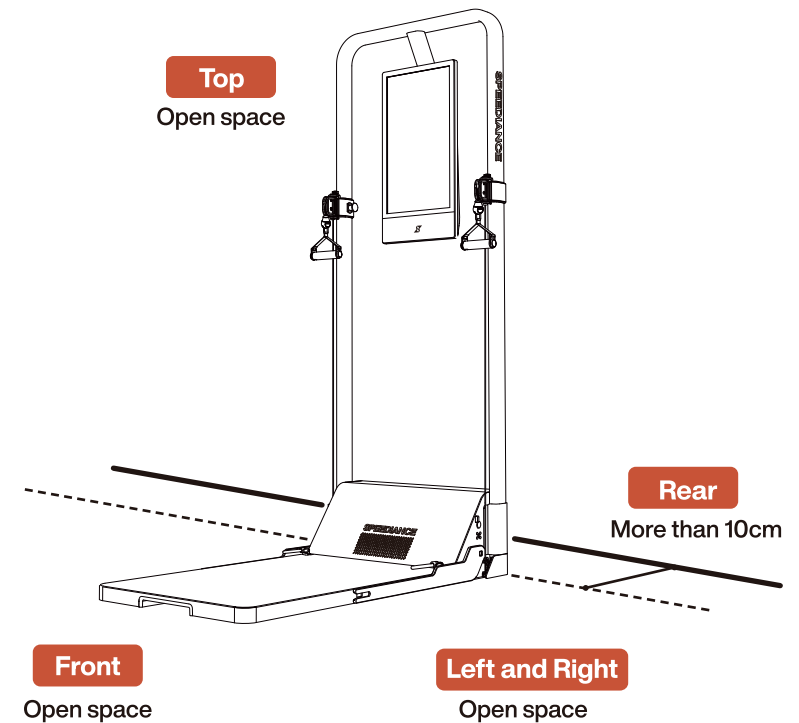
## First Use

Before first use, remove all packaging materials including outer carton, PE foam and gummed paper bag, etc., and tear off the protective film on the product, if any.

Place the product in an indoor well-ventilated place with flat and solid ground.

Keep the product away from heat sources and prevent it from being exposed to direct sunlight. Do not place it in wet or watery places, so as to prevent rust or degradation of insulation effect.

## Placement Precautions

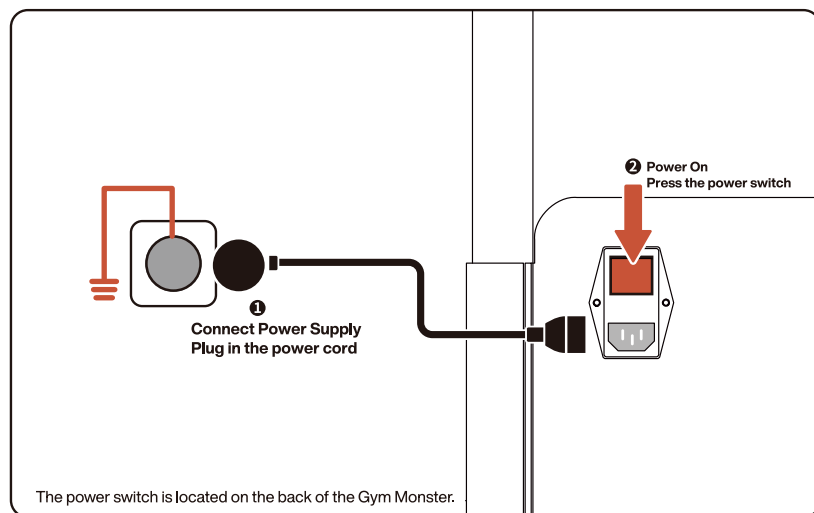


4. The product must be placed on the floor. Keep the top of the product unobstructed, leave a clearance of at least 10cm between the back of the product and the wall, and ensure both sides remain unobstructed.

5. Except for the back of the product, the areas to the front, left, right, and top must remain unobstructed to ensure uninterrupted operation and prevent injury.

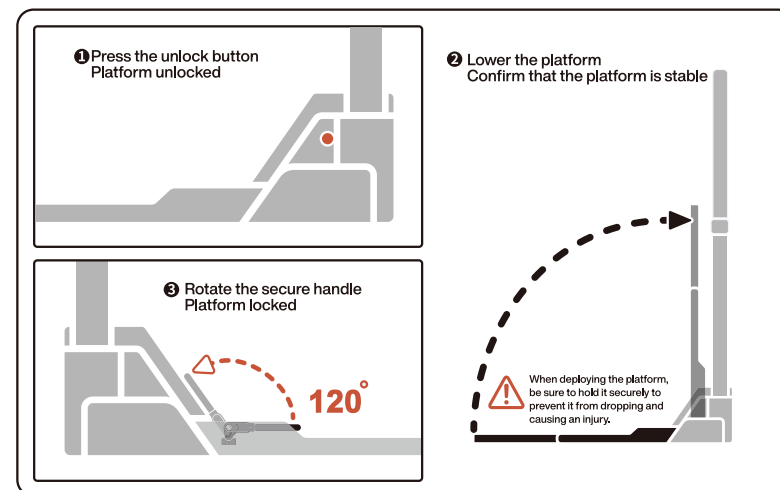
6. Place the product in a dry environment. Do not use it outdoors.

## Connecting the Power and Turning On the Product



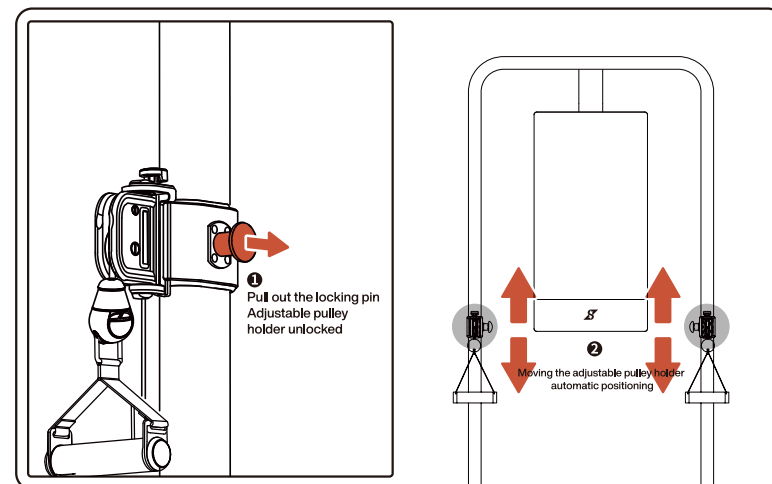
1. Use a grounded three-prong outlet and ensure it is properly grounded.
2. After connecting the power for the first time and turning on the product, let it sit for 5–10 minutes to check whether the exterior is damaged or if there are abnormal noises during operation. If you notice anything unusual, turn off the power immediately and contact Speediance Customer Service.
3. After powering on, double check that the ambient conditions meet the usage requirements and that the platform is completely flat.
4. After completing the above checks, you can proceed to use the product.

## Deploying/Retracting the Platform

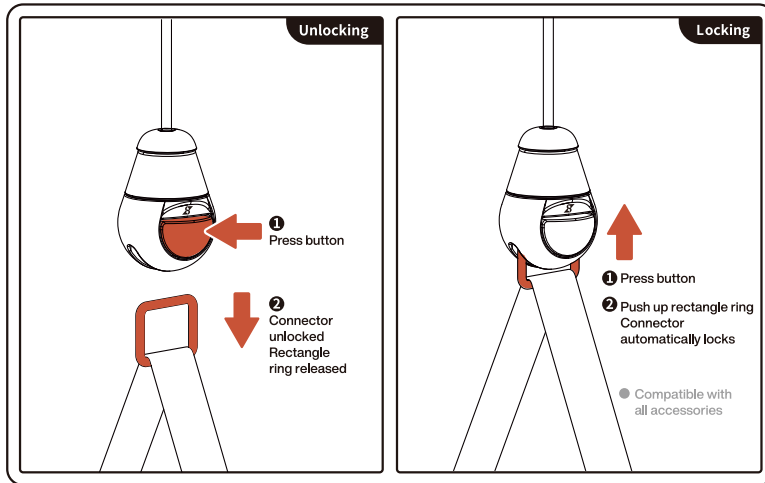


1. The same steps apply for both deploying and retracting the platform.
2. Before deploying the platform, make sure the area is clear of any objects to avoid uneven placement that could cause safety risks.
3. After retracting the platform, confirm that the unlock button is in the locked state to prevent the platform from dropping unexpectedly and causing injury or damage.

## Moving the Adjustable Pulley Holder



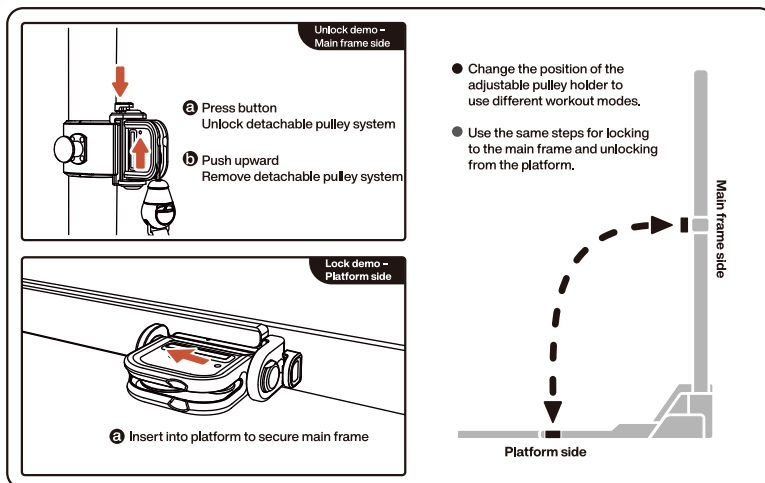
## Replacing Accessories



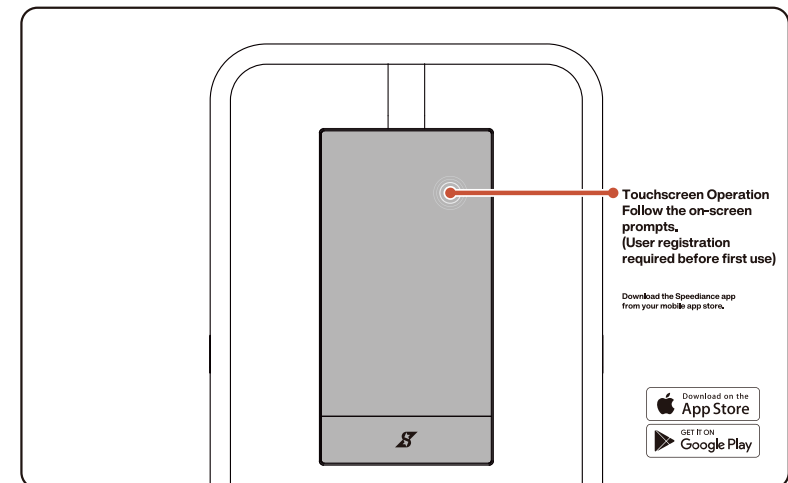
The connector is compatible with all accessories (handle, ankle straps, tricep rope, barbell bar, etc.).

If the connector becomes loose, discontinue use immediately and contact Speediance Customer Service.

## Unlocking the Adjustable Pulley Holder



## User Registration



Confirm that the display shows content correctly and that the touchscreen functions normally.

After verifying that the display is functioning correctly, you can proceed with strength training.

## Parameters

Note:

The parameters in this table are for reference only and may vary from those indicated on the nameplate.

Main unit parameters	
Name	Interactive Multi-Media DigitalFitness Equipment
Dimensions (extended)	1.22*0.69*1.85m(L*W*H)
Dimensions (folded)	0.38*0.69*1.85m(L*W*H)
Weight	78kg
Maximum Power	1800W
Input voltage	100V~230V 50Hz/60Hz
Display resolution	1920*1080
Bluetooth	Bluetooth5.0
Wi-Fi frequency	2.4GHz/5GHz
Speakers	2.1 stereo sound Two full-range speakers: 2*5W (RMS) One bass speaker: 20W

## Cleaning and Maintenance

⚠ Note

Unplug the power cord before cleaning the product.

### Cleaning

1. Regularly clean the dust from the back of the product and the floor to improve heat dissipation and maintain energy efficiency.
2. When cleaning the product, use a soft cloth or sponge dipped in clean water or a non-corrosive neutral detergent. Wipe with clean water afterward, then dry with a dry cloth. Allow the product to dry completely before reconnecting the power.
3. When cleaning, do not allow water to enter the gaps in the product, as this may cause a short circuit or damage the components.
4. When cleaning accessories, use a soft cloth or sponge dipped in clean water or a non-corrosive neutral detergent. Wipe with clean water afterward, then dry with a dry cloth. Allow the accessory to dry completely before using it again.
5. If the product will not be used for a long time, unplug the power cord to prevent it from aging and causing an electric shock or fire.

## Troubleshooting

### Troubleshooting Steps

⚠ Note

If the issue persists after performing the troubleshooting steps, disconnect the product from power and contact Speediance Customer Service.

### Troubleshooting Common Issues

Issue	Possible Cause	Solution
Product not working	<ul style="list-style-type: none"> <li>Power not connected or plug not securely inserted</li> <li>Voltage too low, power outage, or circuit breaker tripped</li> </ul>	<ul style="list-style-type: none"> <li>Ensure the power plug is securely inserted</li> <li>Contact qualified service personnel for electrical issues</li> </ul>
Cable not moving smoothly or making abnormal noises	<ul style="list-style-type: none"> <li>Motor winding issue</li> </ul>	<ul style="list-style-type: none"> <li>Enter Free Workout mode, set the weight to 5–7kg, pull until maximum resistance is reached, and then slowly return to the starting position.</li> </ul>
Accessory connection unstable after replacement	<ul style="list-style-type: none"> <li>Incorrect operation method</li> </ul>	<ul style="list-style-type: none"> <li>First, make sure the connector is fully pressed to the bottom, then insert the buckle securely into the connector.</li> </ul>
Fan continues running after use	<ul style="list-style-type: none"> <li>High ambient temperature, long cooling time</li> <li>High temperature after use</li> </ul>	<ul style="list-style-type: none"> <li>This is normal and the fan will stop automatically after a few minutes</li> </ul>
Machine shaking	<ul style="list-style-type: none"> <li>Uneven ground</li> <li>Platform not locked or not secured</li> </ul>	<ul style="list-style-type: none"> <li>Place product on a flat and stable surface</li> <li>Push locking lever down to the lowest position</li> </ul>
Platform cannot be retracted or deployed	<ul style="list-style-type: none"> <li>Obstruction at the pivot point</li> <li>Platform not unlocked</li> </ul>	<ul style="list-style-type: none"> <li>Remove obstacles</li> <li>Unlock platform according to instructions</li> </ul>
Accessory cannot connect via Bluetooth	<ul style="list-style-type: none"> <li>Accessory battery depleted</li> </ul>	<ul style="list-style-type: none"> <li>Try charging the accessory</li> </ul>
Compartment temperature is high	<ul style="list-style-type: none"> <li>High ambient temperature, long usage time</li> </ul>	<ul style="list-style-type: none"> <li>This is normal and does not indicate a fault</li> <li>Place in a well-ventilated area</li> </ul>
Pulley system cannot be removed	<ul style="list-style-type: none"> <li>Pulley system lock not released</li> <li>Device still operating, cannot be removed</li> </ul>	<ul style="list-style-type: none"> <li>Unlock according to instructions</li> <li>Pause operation using accessory button or screen</li> </ul>

For software issues, refer to the troubleshooting steps in "Personal Center."



## Scope of warranty:

The limited warranty provided by Speediance is restricted exclusively to the repair or replacement of products with material or production defects. This warranty does not cover any indirect losses, including but not limited to loss of data, property damage not solely and directly caused by a product defect, personal injury not solely and directly caused by a product defect, loss of work, or loss of business opportunities.

Speediance warrants that the products you purchased are free from defects. During the warranty period, if a malfunction occurs during the normal use, operation and maintenance of the product in accordance with the user manual, Speediance will provide a free warranty service. If the warranty has expired or Speediance determines that the product was damaged due to misuse or human error, you may choose to have the product repaired at your own expense. All warranty and repair services will be provided in accordance with Speediance's after-sales warranty policy, quality standards and production processes. Speediance's limited warranty applies only to Speediance products purchased through official Speediance channels or authorized dealers. Second-hand Speediance products or products purchased through other third-party channels are not covered by Speediance's limited warranty. The after-sales warranty provided by Speediance is limited in scope and does not constitute an assumption of unlimited liability. You are advised to read this warranty policy carefully in order to understand the warranty duration, conditions, applicable circumstances, cost burden, risks and other relevant terms of Speediance's repair services. The limited warranty provided by Speediance is restricted exclusively to the repair or replacement of products with material or production defects.\*\* This warranty does not cover any indirect losses, including but not limited to loss of data, property damage not solely and directly caused by a product defect, personal injury not solely and directly caused by a product defect, loss of work, or loss of business opportunities.

## Warranty term:

The warranty validity period comes into effect at 0:00 on the day of delivery, and it terminates at 24:00 on the day before the product's expiration date. If the user/logistics provider is unable to provide a specific date of receipt/delivery, the warranty validity period will come into effect on the date that the invoice was issued, or on the date the order was placed. If the user is unable to produce a valid purchase invoice or other proof of purchase, the warranty validity period will come into effect from the day the product leaves the factory, and will be in effect for 30 days.

- The standard warranty period for the main unit is 24 months, and the standard warranty period for accessories is 12 months (pre-installed cables and other items are considered accessories).
- Any parts replaced or repaired during the warranty term shall become the property of Speediance (the user is responsible for returning these parts to Speediance). Any parts replaced or repaired outside the warranty period shall remain the property of the user.

## Prerequisites for free warranty service:

1. The product is a Speediance product purchased from an official Speediance channel or authorized dealer.
2. During the specified warranty period, the product is used under normal conditions and is affected by a performance-related fault not attributable to misuse.
3. The product was purchased primarily for personal or household use (if the product is intended for commercial use, rental or other non-personal/household purposes, a separate procurement agreement must be concluded with Speediance stating the applicable warranty terms). This clause does not affect consumer rights under applicable law.
4. The user must provide valid proof of purchase (such as the order number, invoice or receipt) together with the product serial number.

## Warranty exclusions:

The Speediance warranty does not apply to any non-Speediance branded hardware products or any software (even if packaged, sold or distributed together with Speediance hardware). Speediance shall not be liable for damage resulting from failure to follow the usage instructions for Speediance products, nor for any loss or corruption of data caused by the product. The warranty does not cover the following:

1. Damage caused by factors unrelated to manufacturing, including but not limited to incorrect installation, usage or disassembly, or by failure to follow official instructions or manuals.
2. Direct or indirect damage caused by installation or removal of the product, such as damage to personal property, walls or flooring.
3. Damage caused by regular use or factors unrelated to manufacturing, such as wear, metal rusting, and decline in functionality or appearance (including but not limited to scratches, dents and discoloration of the plastic).
4. Damage caused by age or damage to parts by caused by mandatory training.
5. Damage caused by unauthorized alterations, disassembly, servicing or non-Speediance technical support (such as unsuitable third-party operators, product set-up or installation).
6. Damage caused by unauthorized alterations to the electrical circuit, improper use of the battery charger or external power supplies, and by operating the product on an insufficiently powered or defective battery.
7. Damage caused by reliability or compatibility issues when using unauthorized third-party parts.
8. Damage caused intentionally or by unauthorized modifications (including tampering with product operating data).
9. Damage caused by exposure to extreme conditions (such as high temperatures or corrosive environments).
10. Damage caused by electromagnetic interference or interference from other wireless devices.
11. Damage caused by force majeure events, such as fires, flooding, earthquakes or electrical accidents.

12. Damage caused by using non-commercial grade products for commercial purposes, such as for gyms, hotels, multi-residence facilities or personal training studios.
13. Malfunctions of or damage caused by any third-party products, including those supplied with or integrated into Speediance products at your request.
14. Any software programs, whether supplied with the product or installed after purchase.
15. Parts and products with labels or logos that have been altered or removed.
16. Damage caused by improper storage or transportation of products or by improper use (i.e. being exposed to fire, immersed in water or struck by lightning).
17. Damage caused by contact with liquids (including but not limited to sweat, beverages or rain).
18. Damage or performance issues caused by the use of unofficial, unauthorized or incompatible accessories.
19. Secondary damage or complications resulting from unauthorized repair attempts by the user (even if well-intentioned).
20. Cosmetic aging (such as rusting of metal parts or discoloration of plastic parts) or functional issues caused by extended periods of non-use.
21. Repair requests arising due to a misunderstanding of product functions/performance or unmet expectations (such as workout results failing to meet expectations and other subjective circumstances), unless there is clear evidence of a hardware defect.
22. Accelerated wear or premature component failure resulting from intensive use by multiple users (such as frequent use by more than three users).
23. Structural damage, component deformation or performance failures caused by the user weight or usage intensity exceeding the maximum load stated in the product specifications.
24. Damage caused by improper use (such as suspending heavy objects, use by pets or use of the product as a support tool) or for any purpose other than its intended design.
25. Startup failures or functional issues caused by unsuccessful software/firmware upgrades that are not attributable to Speediance's servers.
26. Mechanical, structural, electronic or cosmetic damage caused by improper storage (such as failure to lock folding mechanisms, placing the product upside down or stacking heavy objects on the product).
27. Interruptions in access, changes to content, functional changes or termination of mobile apps or online services provided for use with the product (such as course subscriptions or live-streaming services).
28. Associated damage caused by failure to promptly replace components that have reached the end of their service life or are expressly designated as consumable parts (such as cables).
29. Repair requests from subsequent owners after transfer of product ownership (i.e. second-hand transactions), even if the product is still under warranty.
30. Any personal injury, property damage or other consequences caused by failure to comply with product safety warnings and usage instructions.

## How to make a warranty claim

In the event of a performance-related issue that is covered by the terms of this warranty policy, please contact Speediance Customer Service at [after-sales@speediance.com](mailto:after-sales@speediance.com). To obtain prompt assistance, we recommend that you contact us as soon as you notice the issue. You must provide valid proof of purchase (such as the order number, invoice or receipt) together with the product serial number to make a warranty claim. Services not covered by Speediance's limited warranty policy may be subject to additional charges.

### Amendments to and applicability of warranty terms

Speediance reserves the right to amend this Warranty Policy for the following reasons:

1. Legal and regulatory requirements: To comply with newly enacted or amended laws, regulations, rules and administrative directives.
2. Product technical iterations: Where upgrades in product technology or changes in service models require changes to warranty procedures.
3. Force majeure: Where performance of the original terms is rendered impossible due to natural disasters, policy changes or other force majeure event.
4. Effective date of these amendments: Amendments that reduce your responsibilities, enhance your rights or expand the scope of the warranty shall take effect immediately. Amendments that narrow the scope of the warranty or impose additional obligations on you will be announced on the official website or communicated by email, and shall apply to products purchased on or after the date of that announcement. Products purchased before the date of that announcement shall continue to be covered by the warranty terms in effect at the time of purchase.
5. Following these amendments, Speediance may make further changes to this Warranty Policy for the reasons stated above and publish such changes through the app, official website, product interface or other channels. After the changes are published, you will be granted a 60-day period to lodge an objection. If you have any objections, you may contact Speediance Customer Service ([after-sales@speediance.com](mailto:after-sales@speediance.com)) within the 60-day period. If you do not lodge any objections within this period, you shall be deemed to have accepted the revised warranty terms and policy.

Regardless of whether the product is under warranty, if you request a home repair service (including but not limited to on-site inspection, repair or installation of a new product), any resulting service fees (such as transportation and labor costs) shall be borne by you. For more information on service fees, please contact Speediance Customer Service.



**[after-sales@speediance.com](mailto:after-sales@speediance.com)**



Address: Room 1901, 1902, 1903, 1905, 1906, 1907, 19th Floor, Gemdale Viseen Tower A, No.16, Gaoxin 10th South Road, High-tech Zone, Yuehai Street, Nanshan District, Shenzhen, Guangdong Province, China.



## FCC warning:

This equipment has been tested and found to comply with the limits for a Class B digital device, pursuant to part 15 of the FCC Rules. These limits are designed to provide reasonable protection against harmful interference in a residential installation. This equipment generates, uses and can radiate radio frequency energy and, if not installed and used in accordance with the instructions, may cause harmful interference to radio communications. However, there is no guarantee that interference will not occur in a particular installation. If this equipment does cause harmful interference to radio or television reception, which can be determined by turning the equipment off and on, the user is encouraged to try to correct the interference by one or more of the following measures:

- Reorient or relocate the receiving antenna.
- Increase the separation between the equipment and receiver.
- Connect the equipment into an outlet on a circuit different from that to which the receiver is connected.
- Consult the dealer or an experienced radio/TV technician for help.

Caution: Any changes or modifications to this device not explicitly approved by manufacturer could void your authority to operate this equipment.

This device complies with part 15 of the FCC Rules. Operation is subject to the following two conditions:

(1) This device may not cause harmful interference, and (2) this device must accept any interference received, including interference that may cause undesired operation.

This equipment complies with FCC radiation exposure limits set forth for an uncontrolled environment. This equipment should be installed and operated with minimum distance 20cm between the radiator and your body.

## ISED Statement

English: This device contains licence-exempt transmitter(s)/receiver(s) that comply with Innovation, Science and Economic Development Canada's licence-exempt RSS(s). Operation is subject to the following two conditions:

(1) This device may not cause interference.

(2) This device must accept any interference, including interference that may cause undesired operation of the device.

The digital apparatus complies with Canadian CAN ICES-3(B)/NMB-3(B).

French: Cet appareil contient des émetteurs/récepteurs exempt de licence qui sont conformes aux RSS exemptés de licence d'Innovation, Sciences et Développement économique Canada.

L'exploitation est soumise aux deux conditions suivantes:

(1) Cet appareil ne doit pas provoquer d'interférences.

(2) Cet appareil doit accepter toute interférence, y compris les interférences susceptibles de provoquer un fonctionnement indésirable de l'appareil. L'appareil numérique du Canada peut - 3 (b) / nmb - 3 (b).

This device meets the exemption from the routine evaluation limits in section 2.5 of RSS 102 and compliance with RSS 102 RF exposure, users can obtain Canadian Information on RF exposure and compliance.

cet appareil est conforme à l'exemption des limites d'évaluation courante dans la section 2.5 du cnr-102 et conformité avec rss 102 de l'exposition aux rf, les utilisateurs peuvent obtenir des données canadiennes sur l'exposition aux champs rf et la conformité.

This equipment complies with Canada radiation exposure limits set forth for an uncontrolled environment.

Cet équipement est conforme aux limites d'exposition aux rayonnements du Canada établies pour un environnement non contrôlé.

This equipment should be installed and operated with minimum distance 20cm between the radiator & your body.

Cet équipement doit être installé et utilisé à une distance minimale de 20 cm entre le radiateur et votre corps.

The device for operation in the band 5150-5250 MHz is only for indoor use to reduce the potential for harmful interference to co-channel mobile satellite systems. L'appareil destiné à fonctionner dans la bande 5150-5250 MHz est uniquement destiné à une utilisation en intérieur afin de réduire le potentiel d'interférences nuisibles aux systèmes mobiles par satellite canadiens.

This radio transmitter has been approved by Industry Canada to operate with the antenna types listed with the maximum permissible gain indicated. Antenna types not included in this list, having a gain greater than the maximum gain indicated for that type, are strictly prohibited for use with this device. Le présent émetteur radio a été approuvé par l'industrie Canada pour fonctionner avec les types d'antenne énumérés ci-dessous et ayant un gain admissible maximal. Les types d'antenne non inclus dans cette liste, et dont le gain est supérieur au gain maximal indiqué, sont strictement interdits pour l'exploitation de l'émetteur.