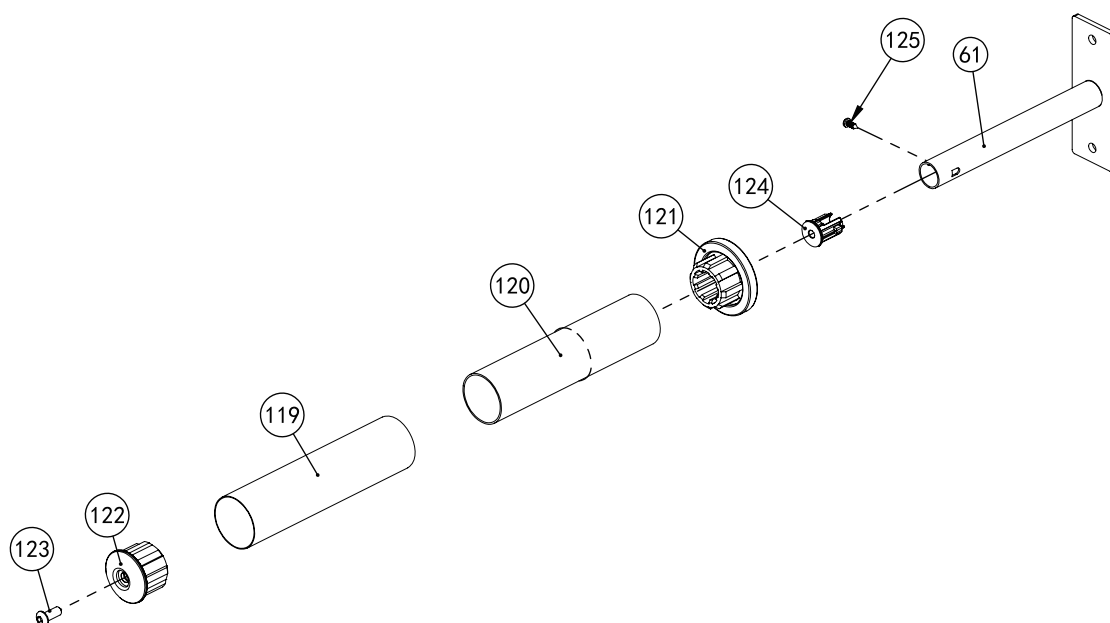


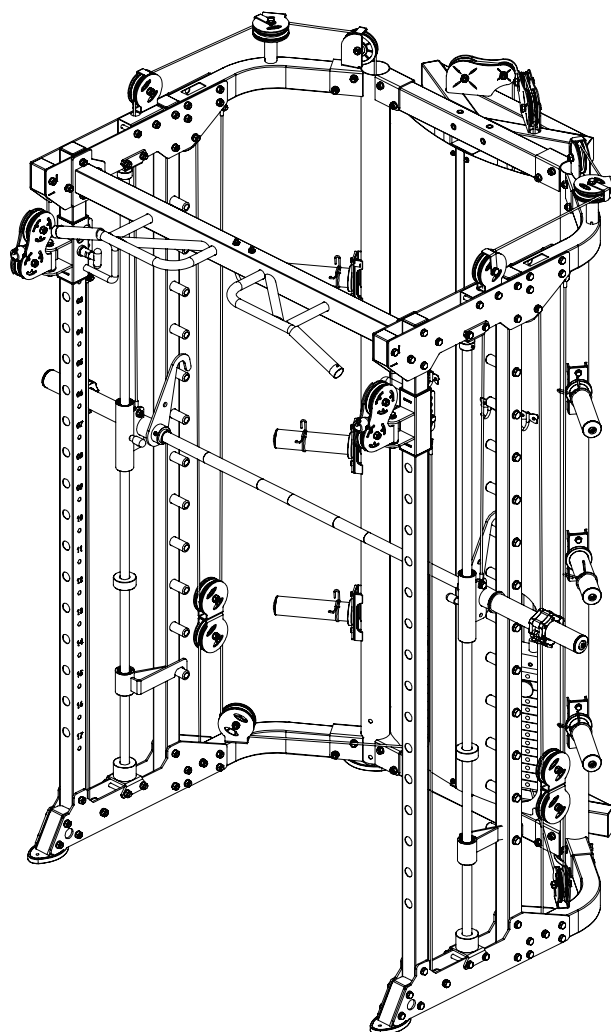
ASSEMBLY DRAWING



No.	Description	Note	Qty.
119	stainless steel tube	$\phi 50 \times 0.8 \times 200$	1
120	barbell bar tube	$\phi 48 \times 1.5 \times 198$	1
121	inner support cap	$\phi 70 \times \phi 44.8 \times \phi 25.5 \times 30$	1
122	outside support cap	$\phi 50 \times \phi 44.8 \times \phi 25.5$	1
123	button head socket screw	M8*20	1
124	nut	M8	1
61	barbell plate holder		1
125	"+"slotted countersunk head bolt	M4*10	1

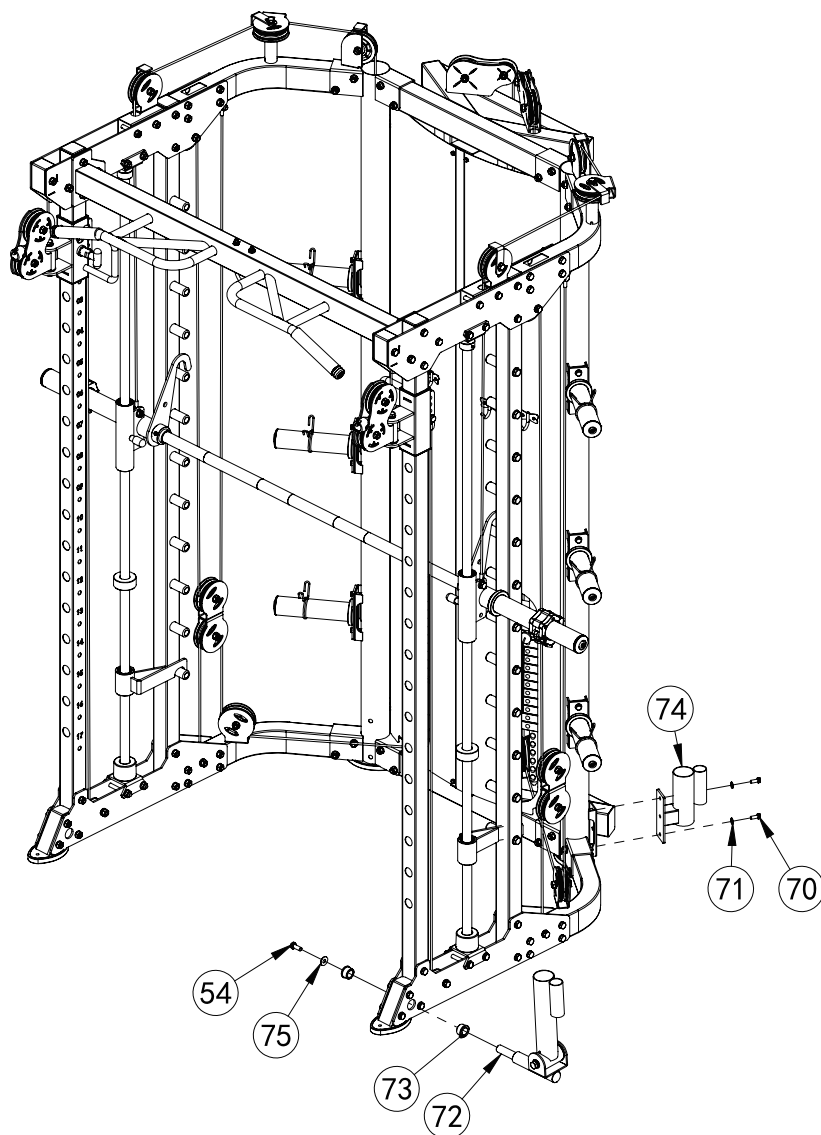
barbell plate holder

QTY: 6PCS/SET



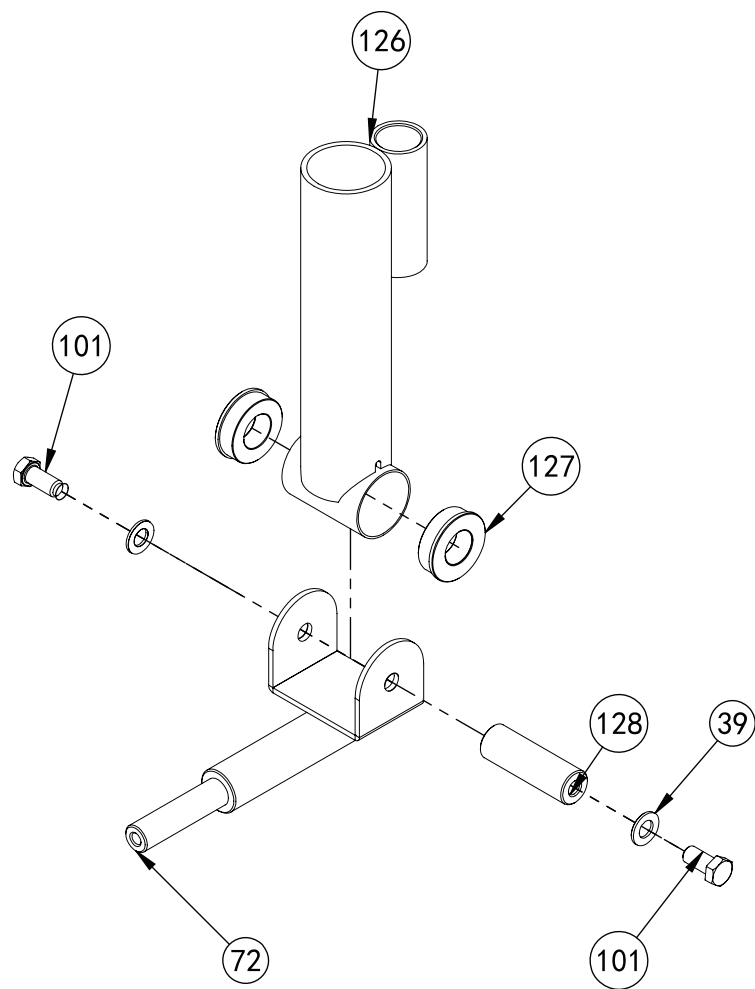
- 1 Connect shield left-63, connection strap-62 and shield right-64
- 2 Fix hook-67 fastening on shield using "+"slotted countersunk head bolt-68 and M4 lock nut-69
- 3 Fix shield fastening on main frame using M6x16 hexagon bolt-65, $\Phi 6$ washer-66
- 4 Fix barbell plate holder-61 on main frame using M8x20 hexagon bolt-70, $\Phi 8$ washer-71

ASSEMBLY STEP 9



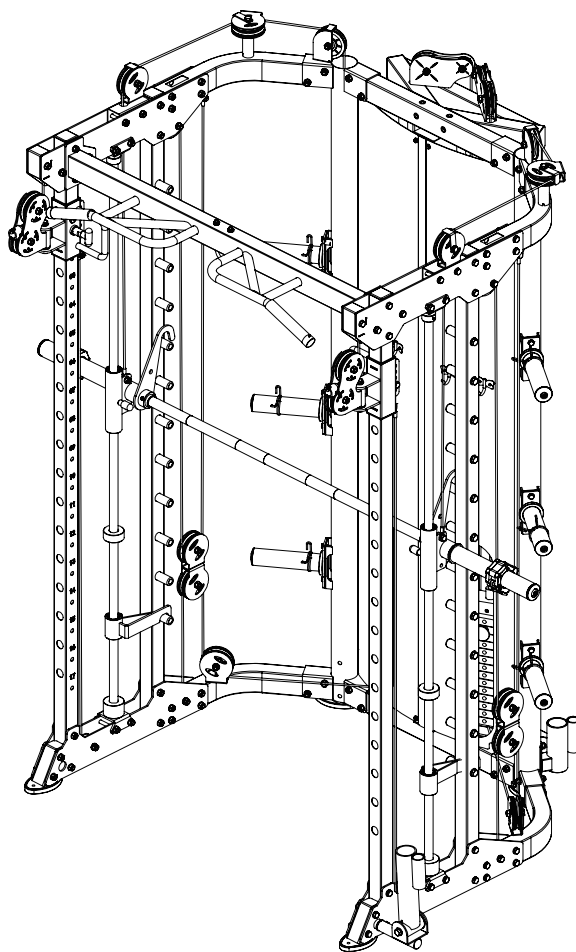
No.	Description	Note	Qty.
72	core trainer		1
74	barbell rod cover		1
73	powder metallurgy sleeve	$\phi 33.2 * \phi 29 * \phi 20 * 18$	2
75	big washer		1
54	hexagon bolt	M10*25	1
70	hexagon bolt	M8*20	2
71	washer	$\phi 8$	2

ASSEMBLY DRAWING



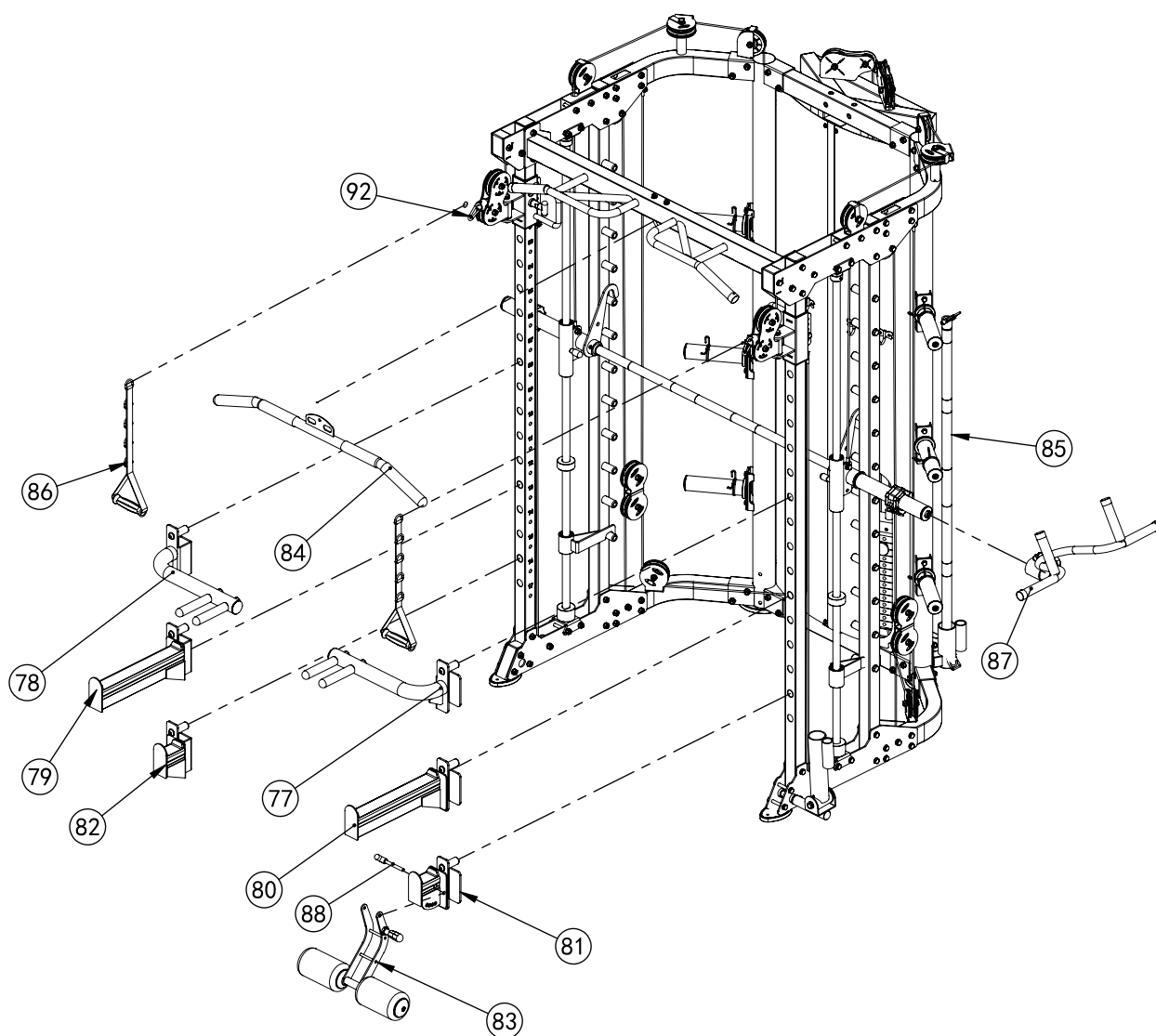
Core trainer
QTY: 1PCS/SET

No.	Description	Note	Qty.
72	core trainer		1
126	rotation tube		1
127	powder metallurgy sleeve	$\phi 50 * \phi 47 * \phi 25 * 15$	2
39	spring washer	M12	2
128	rotation bearing	$\phi 25 * 77 * M12$	1
101	hexagon bolt	M12*25	2



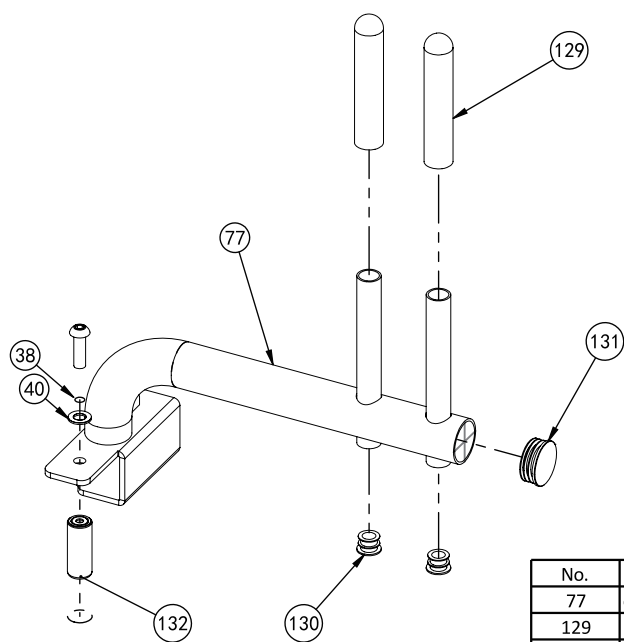
- 1 Fix core trainer-72 fastening on main frame using M10x25 hexagon bolt-54, $\Phi 10$ big washer-75 and powder metallurgy sleeve-73
- 2 Fix barbell rod cup-74 fastening on upright frame using M10x95 hexagon bolt-76, $\Phi 10$ washer-11 and M10 lock nut-10

ASSEMBLY DRAWING



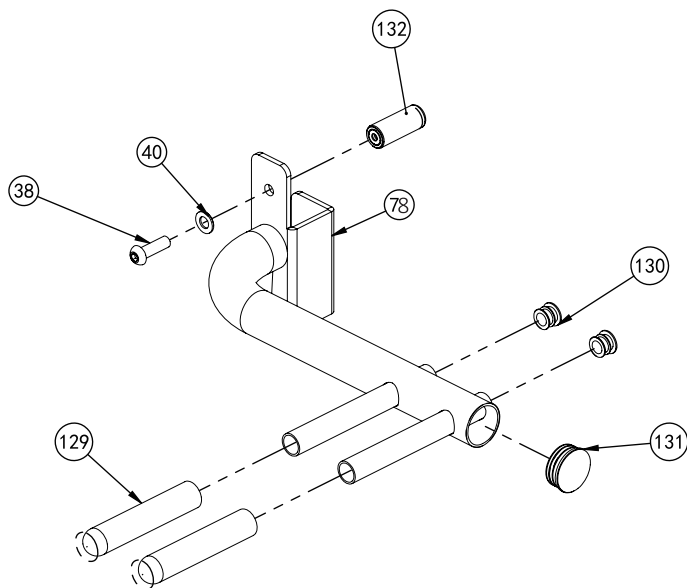
No.	Description	Note	Qty.
77	dip bar left		1
78	dip bar right		1
79	barbell rod holder right		1
80	barbell rod holder left		1
81	barbell rod holder short left		1
82	barbell rod holder short right		1
83	leg curl tube		1
84	long bar		1
85	ship rod		1
86	hand belt		2
87	pull lift device		1
88	T shape pin	Φ10*100	1

ASSEMBLY DRAWING



dip bar left
QTY: 1PCS/SET

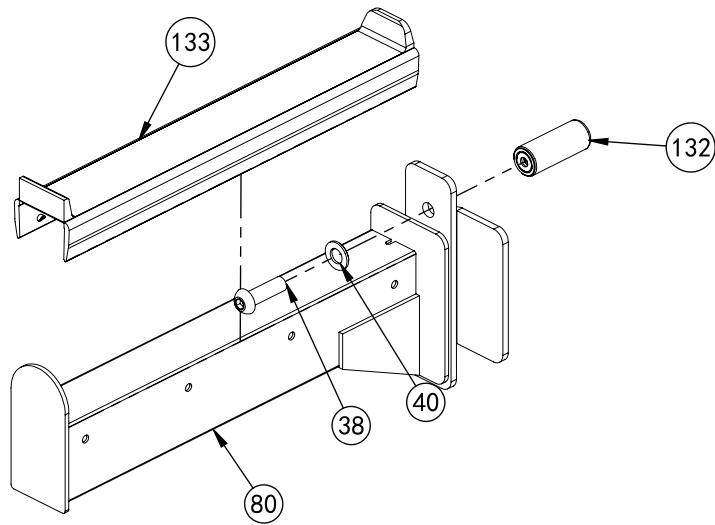
No.	Description	Note	Qty.
77	dip bar left		1
129	handle cover	$\phi 24.5 \times 150$	2
130	inner plug	$\phi 25 \times 2$	2
131	tube plug	$\phi 48 \times 2.5$	1
132	hang lever shaft	M12	1
38	button head socket screw	M12*40	1
40	washer	$\phi 12$	1



dip bar right
QTY: 1PCS/SET

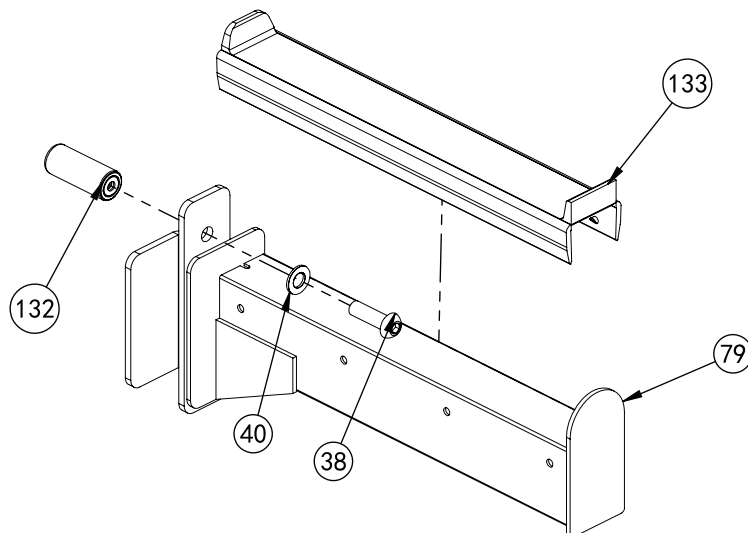
No.	Description	Note	Qty.
75	big washer		1
129	handle cover	$\phi 24.5 \times 150$	2
132	hang lever shaft	M12	1
38	button head socket screw	M12*40	1
130	inner plug	$\phi 25 \times 1.5$	2
131	tube plug	$\phi 48 \times 2.5$	1
40	washer	$\phi 12$	1

ASSEMBLY DRAWING



barbell rod holder left
QTY: 1PCS/SET

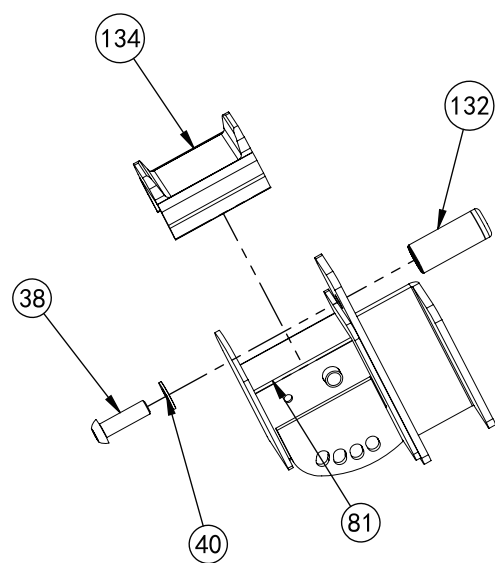
No.	Description	Note	Qty.
80	barbell rod holder left		1
38	button head socket screw	M12*40	1
40	washer	Φ12	1
132	hang lever shaft	M12	1
133	long safety catch outside rubber		1



barbell rod holder right
QTY: 1PCS/SET

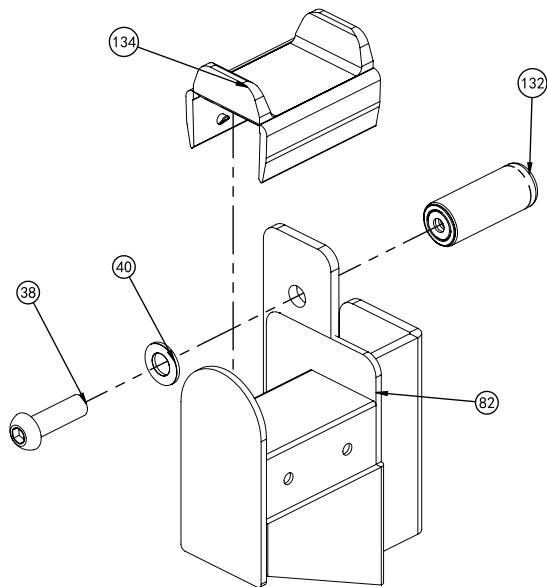
No.	Description	Note	Qty.
79	barbell rod holder right		1
132	hang lever shaft	M12	1
38	button head socket screw	M12*40	1
133	long safety catch outside		1
40	washer	Φ12	1

ASSEMBLY DRAWING



barbell rod holder short left
QTY: 1PCS/SET

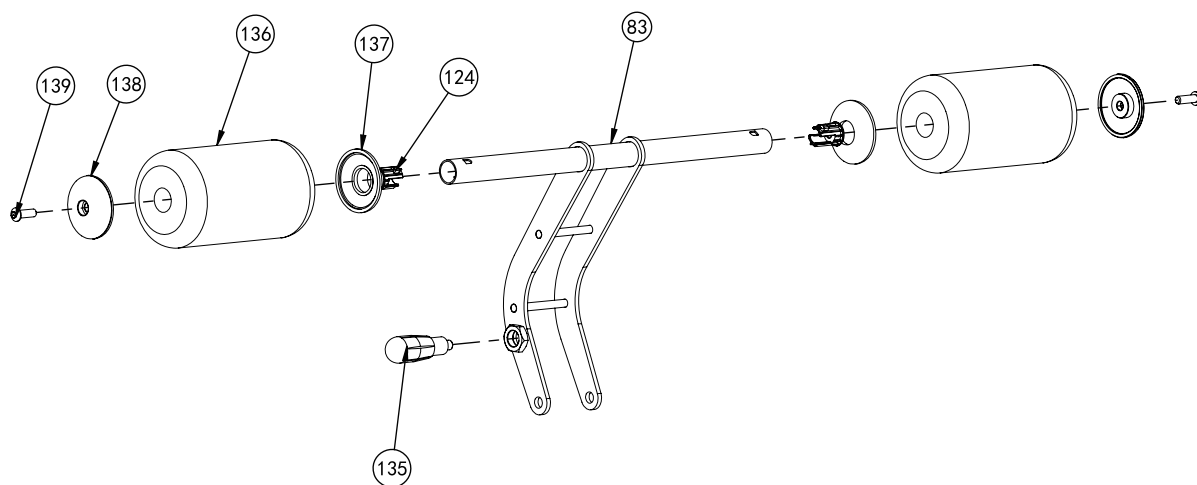
No.	Description	Note	Qty.
81	barbell rod holder short left		1
132	hang lever shaft	M12	1
40	washer	Φ12	1
38	button head socket screw	M12*40	1
134	long safety catch outside rubber	85mm	1



barbell rod holder short right
QTY: 1PCS/SET

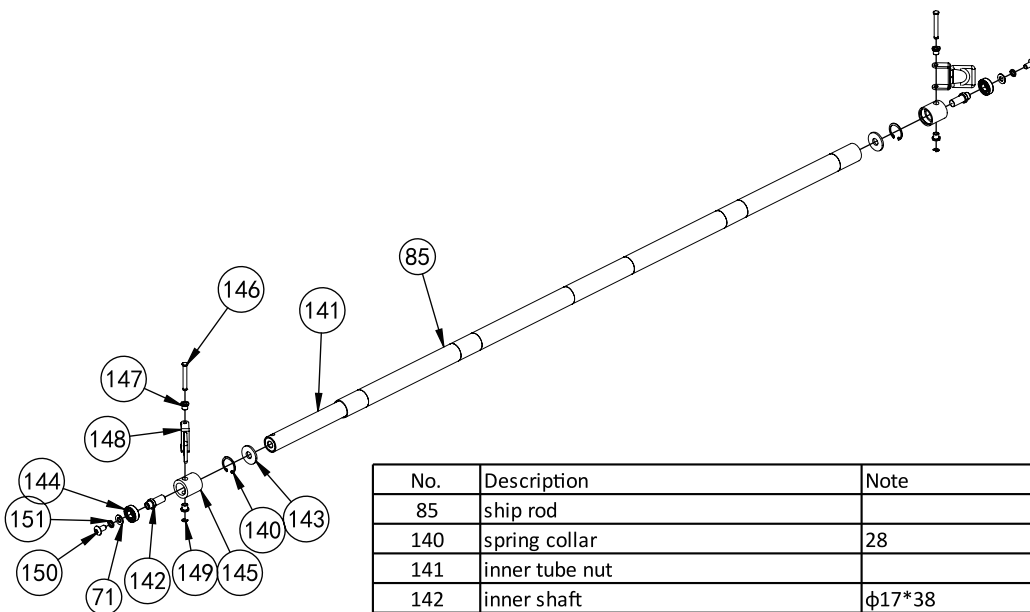
No.	Description	Note	Qty.
82	barbell rod holder short right		1
38	button head socket screw	M12*40	1
132	hang lever shaft	M12	1
134	long safety catch outside	85mm	1
40	washer	Φ12	1

ASSEMBLY DRAWING



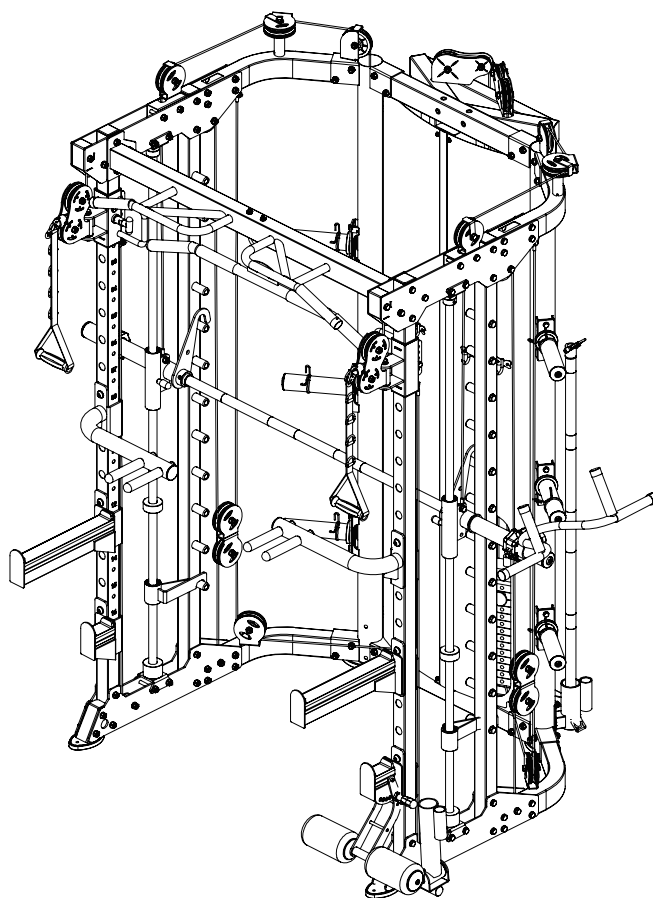
leg curl tube
QTY: 1PCS/SET

No.	Description	Note	Qty.
83	leg curl tube		1
135	plum flower locking spring knob	M18X12Xφ10	1
136	175 sponge	φ25Xφ100X175	2
137	sponge inner cap	φ65*φ25*12	2
138	sponge outer cap	φ65*φ9*12	2
139	hexagon socket button head	M8*25	2
124	nut	M8	2



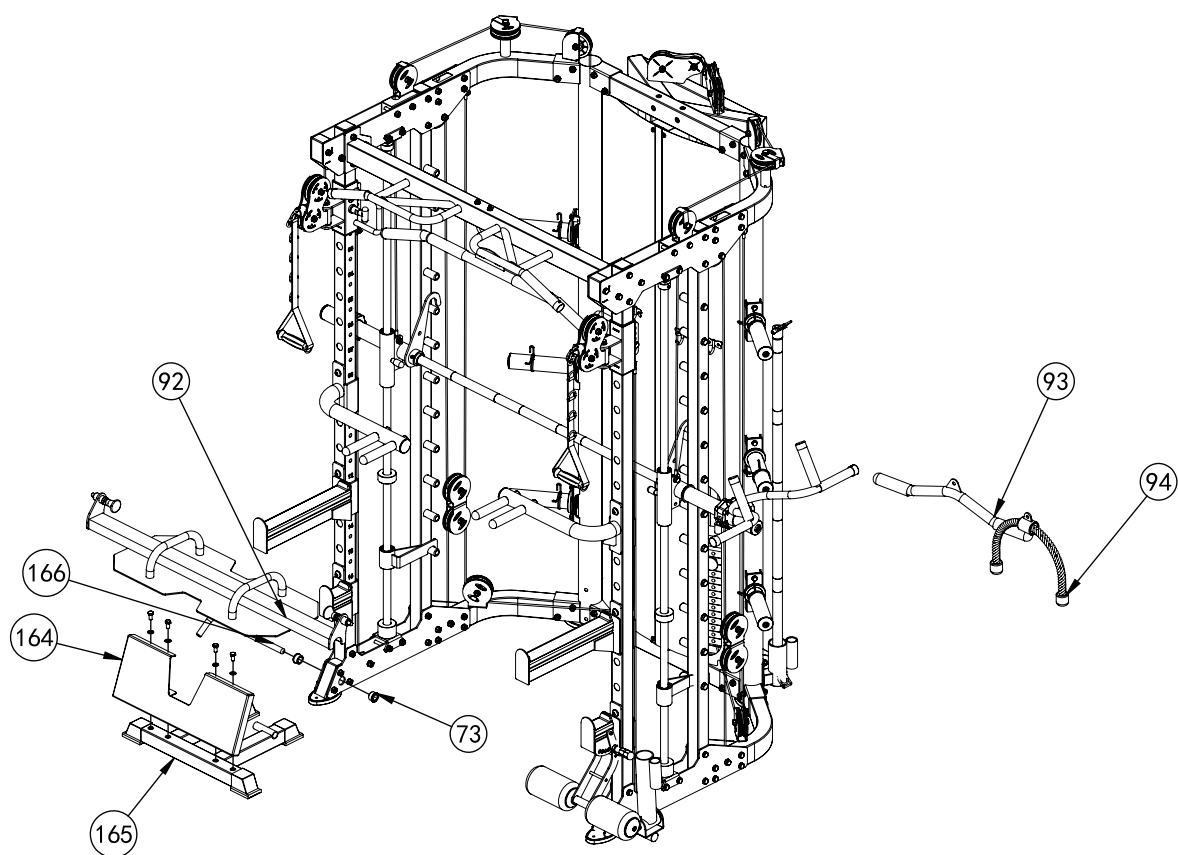
ship rod QTY:
1PCS/SET

No.	Description	Note	Qty.
85	ship rod		1
140	spring collar	28	2
141	inner tube nut		1
142	inner shaft	φ17*38	2
143	tie-rod washer		2
144	bearing	6001-2RS	2
145	bearing sleeve		2
146	T shape pin		2
147	bushing		4
148	U shape fastener		2
149	check ring	5	2
150	hexagon socket button head screws	M8*16	2
151	spring gasket	φ8	2
71	washer	φ8	2



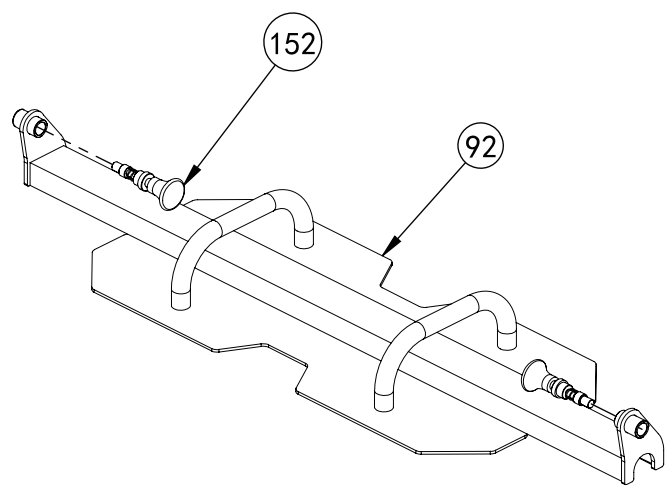
- 1 Connect leg curl tube-83 and barbell rod holder short left-81 using T shape pin-88
- 2 Put the attached part on the machine

ASSEMBLY STEP 11



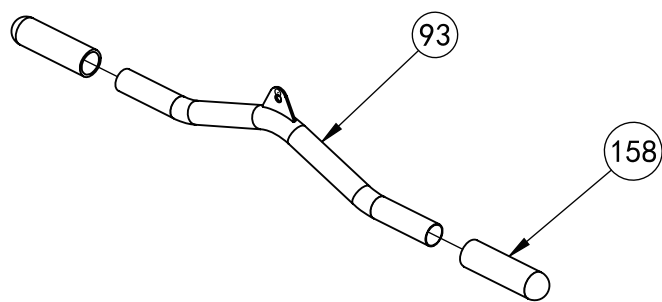
No.	Description	Note	Qty.
92	footplate		1
94	bicep rope		1
93	low pull handle		1
164	footplate		1
165	footplate support frame		1
73	powder metallurgy sleeve	$\phi 33.2 * \phi 29 * \phi 20 * 18$	2
166	L shape pin		1

ASSEMBLY DRAWING



footplate
QTY: 1PCS/SET

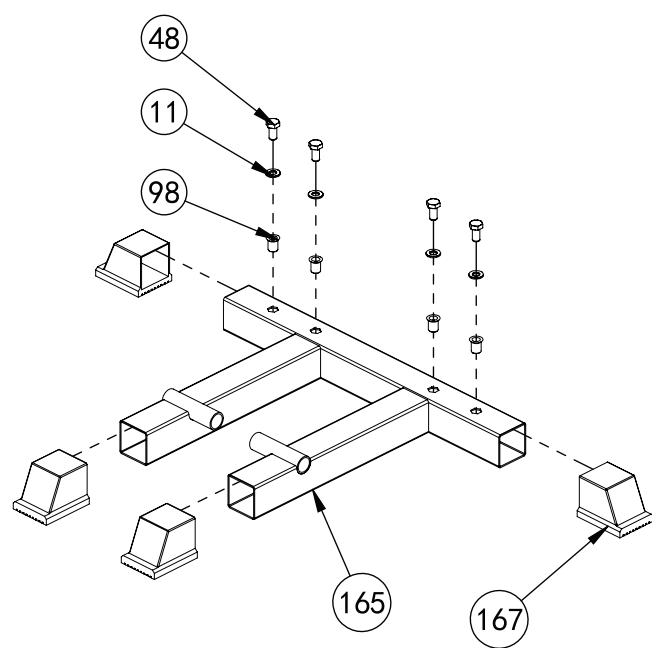
No.	Description	Note	Qty.
92	footplate		1
152	umbrella pin		2



low pull handle
QTY: 1PCS/SET

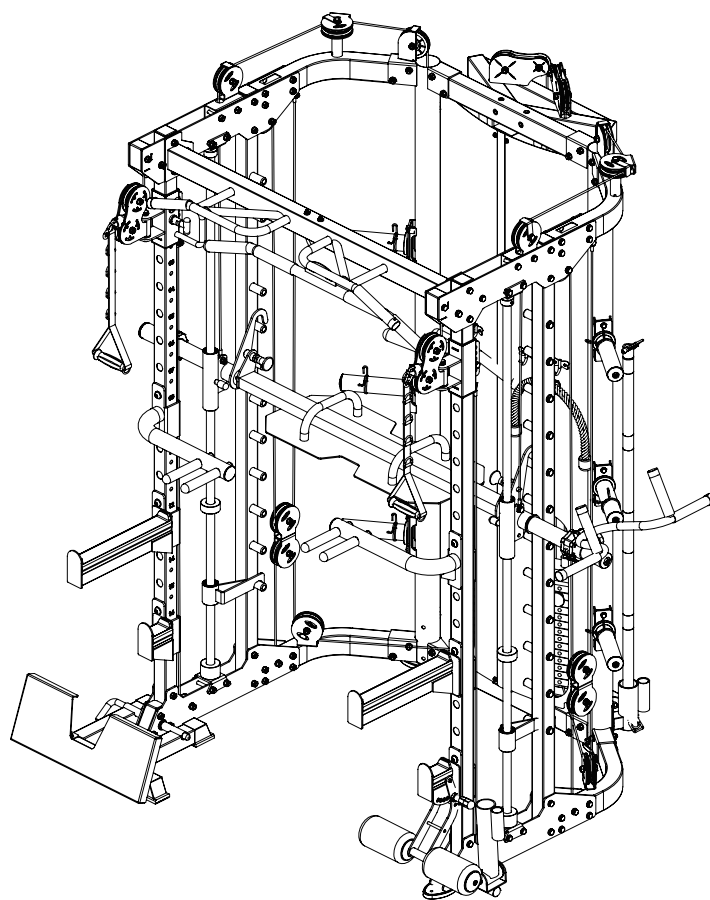
No.	Description	Note	Qty.
93	low pull handle		1
158	handle cover	Φ32*120	2

ASSEMBLY DRAWING



footplate support frame
QTY: 1PCS/SET

No.	Description	Note	Qty.
165	footplate support frame		1
167	50 foot cover	□50*50	4
98	countersunk head rivet nut	M10	4
48	hexagon bolt	M10*20	4
11	washer	Φ10	4



- 1 Assembly footplate-92 on barbell rod.
- 2 Hang low pull handle-93,wire-94 on main machine.
- 3 Assembly powder metallurgy sleeve-73 on main machine.
- 4 Assembly footplate-164 on footplate support frame-165 using M10*20 hexagon bolt-48,Φ10 washer-11.
- 5 Assembly footplate support frame-165 on main machine using L shape pin-166.



Success doesn't come from sitting on your ass. Success comes from striving to be better than yesterday. It comes from the urge to push boundaries and break through barriers. We know this because we've been there from selling the first piece of Force USA gear in 2007 to providing commercial and home gym equipment all over the globe. We are for helping you become your strongest self. **We are for innovation in strength.**

WARRANTY

LIFETIME WARRANTY ON FRAME - 2 YEAR WARRANTY ON MOVING PARTS

The Force USA range of strength equipment carries a Lifetime Structural Warranty along with two years cover on all cables and pulleys. This warranty applies to first owners and does not cover second-hand equipment or re-sold equipment. This Force USA warranty covers only failures due to defects in structural, cables and pulleys and workmanship that occur during regular home use. It will not cover damage that occurs in transport/delivery or failure due to misuse, abuse, neglect, misapplication, alteration or improper assembly of the product. This warranty does not cover the use or failure of equipment in-studio commercial applications. The replacement or repair provided for under the Force USA warranty is the responsibility of the user, and the customer will be responsible for any freight charges that apply. Force USA will not be liable for any consequential damages or breach of any implied warranty on the range of Force USA strength equipment. Force USA reserves the right to provide reconditioned parts and/or to request a return and repair existing defective components on the Force USA product.

Force USA uses commercial-grade upholstery for all Force USA strength equipment. The commercial vinyl comes with a rip-stop mesh backing to help prevent rips and tears.

WWW.FORCEUSA.COM