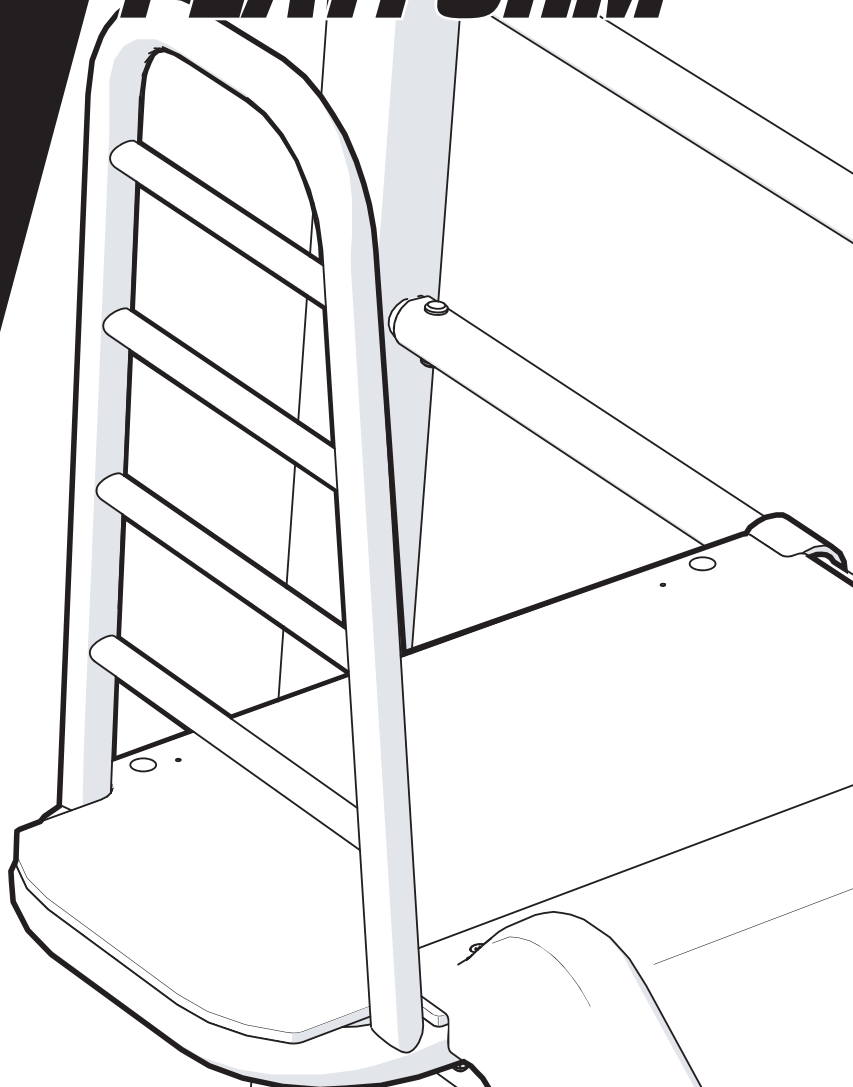




PLAYBASE PLATFORM



BERG



***WELCOME
TO OUR
WORLD***

***IT'S YOUR
NOW***

ME

'S

HI BERGER This BERG will make you jump, ride and fly the outdoors. With fresh air in your hair and this BERG at your side, you feel strong wherever you fly. Feel confident, even when the road ahead is bumpy. Feel at home, the moment you step outside. Because you know the sky is yours. And you are about to touch it.

REGISTER YOUR BERG



Register your new
BERG product now,
unlock free extras
and become a
true BERGER via
BERG.com/registration

CONTENT

What is in the box? 4

Make sure you have everything.

How to install it? 5

Follow the steps, easy as that.

What to know? 11

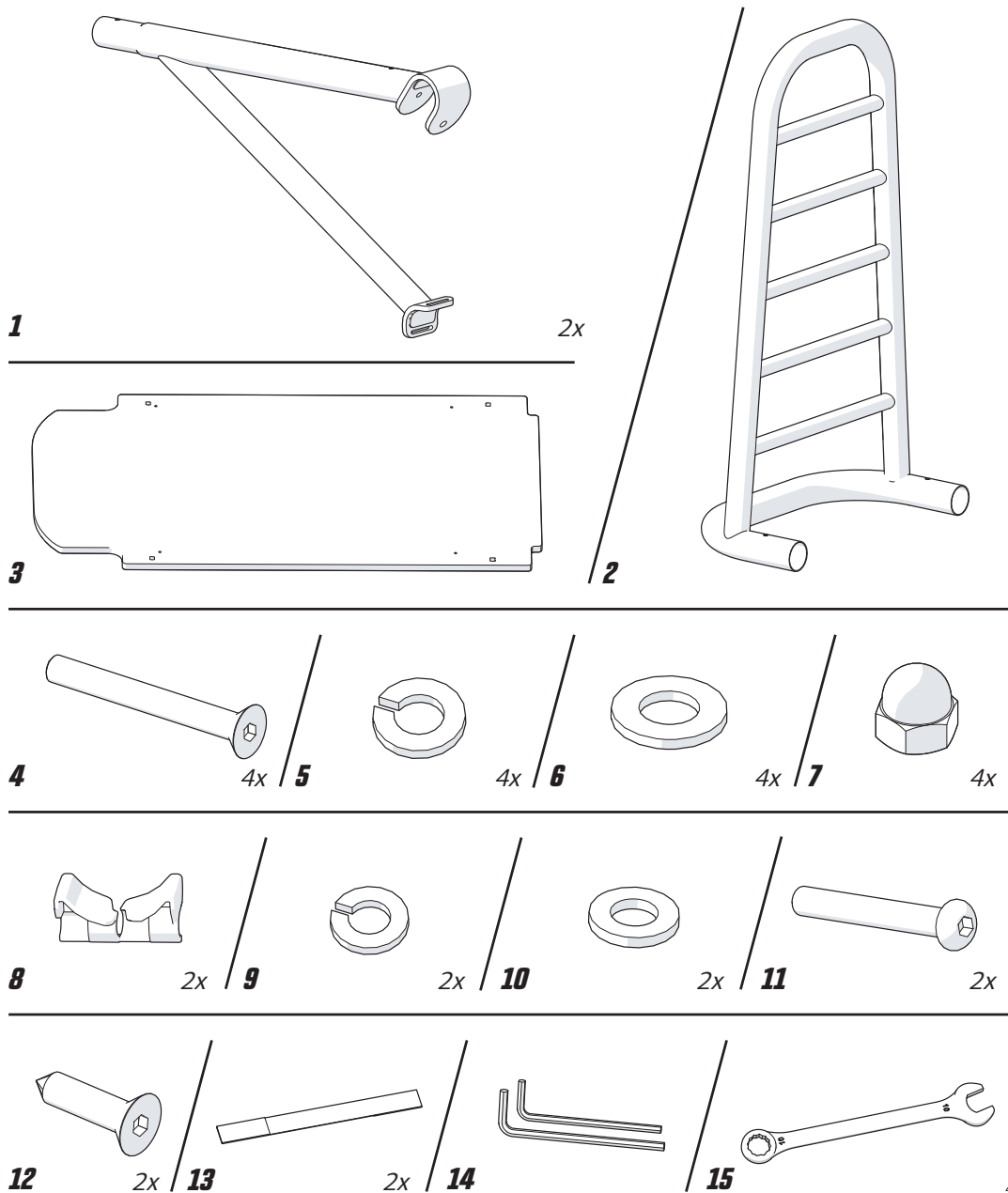
Warnings, info and warranty.

Ready to go!

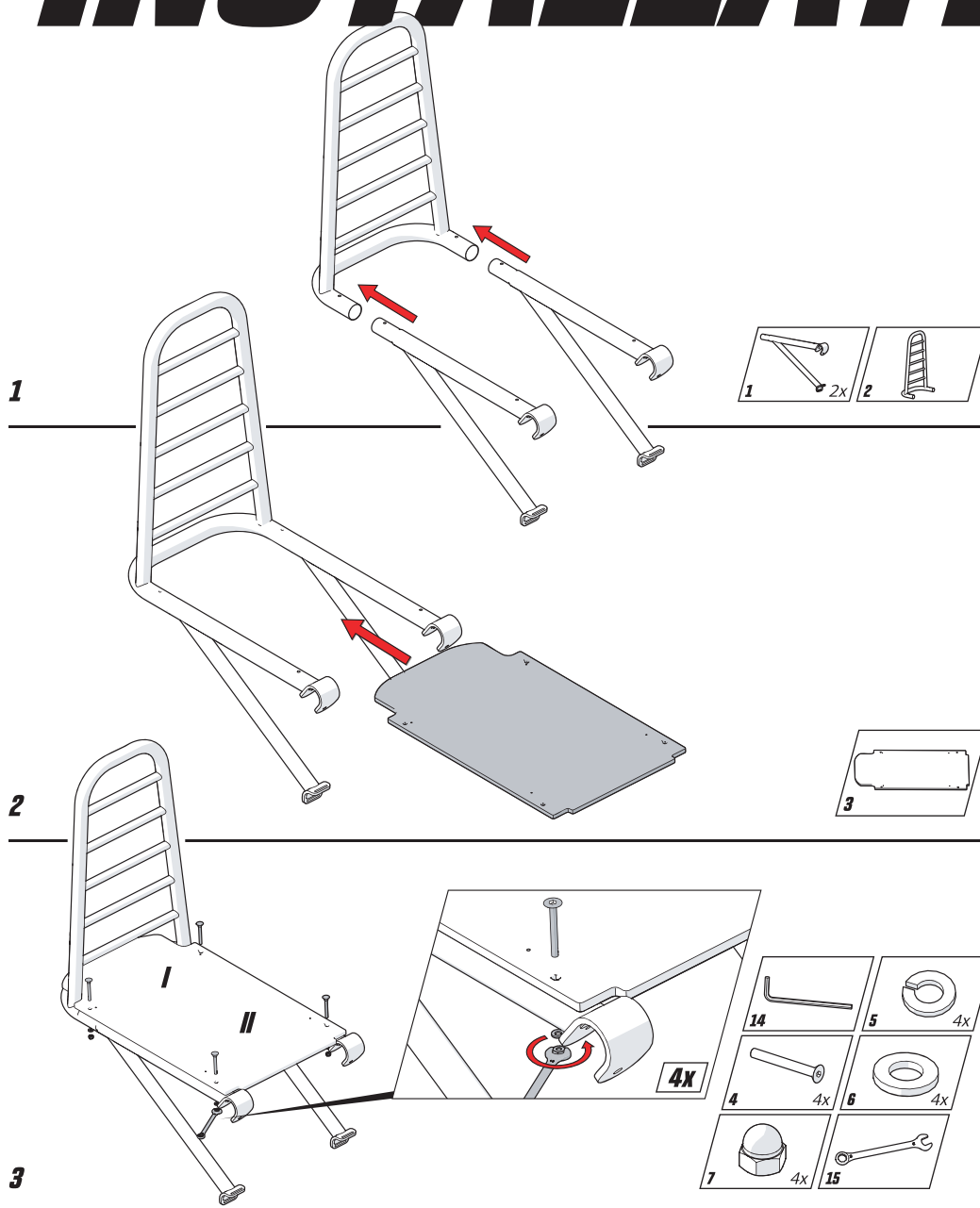
The outdoors is yours. Enjoy it.

Although we  know you can do it yourself  please read the manual carefully and check out our instruction videos on **YouTube.com/BERGtoys**

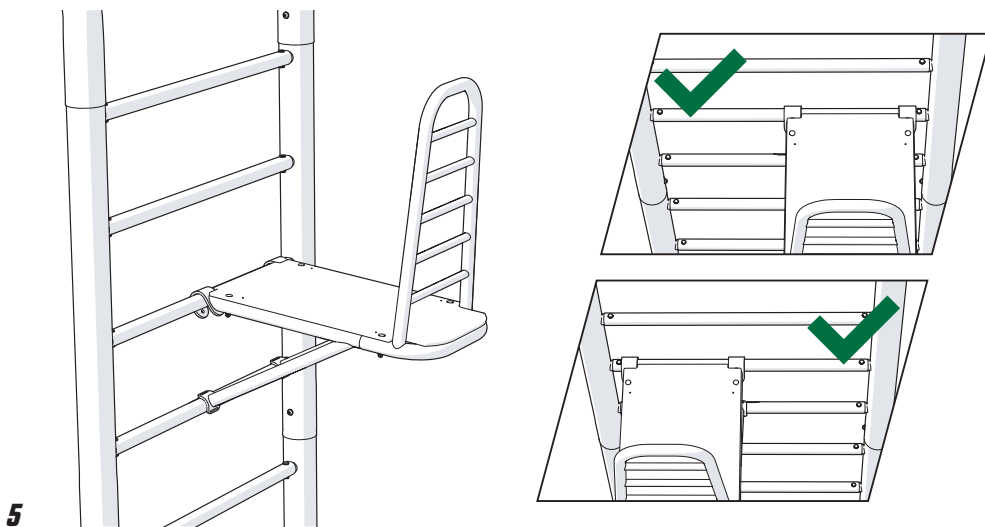
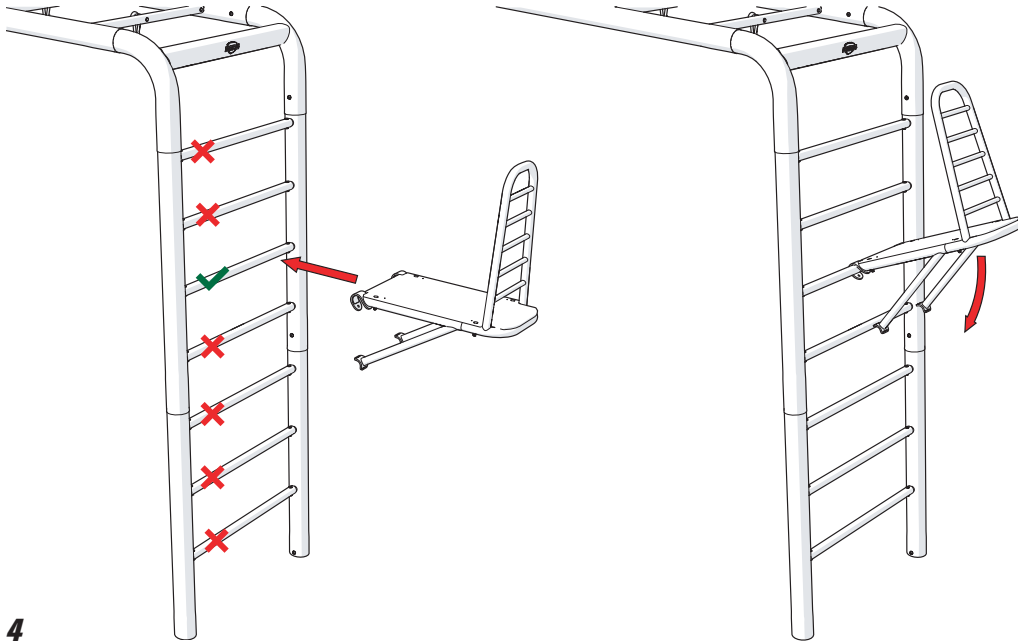
UNPACKING

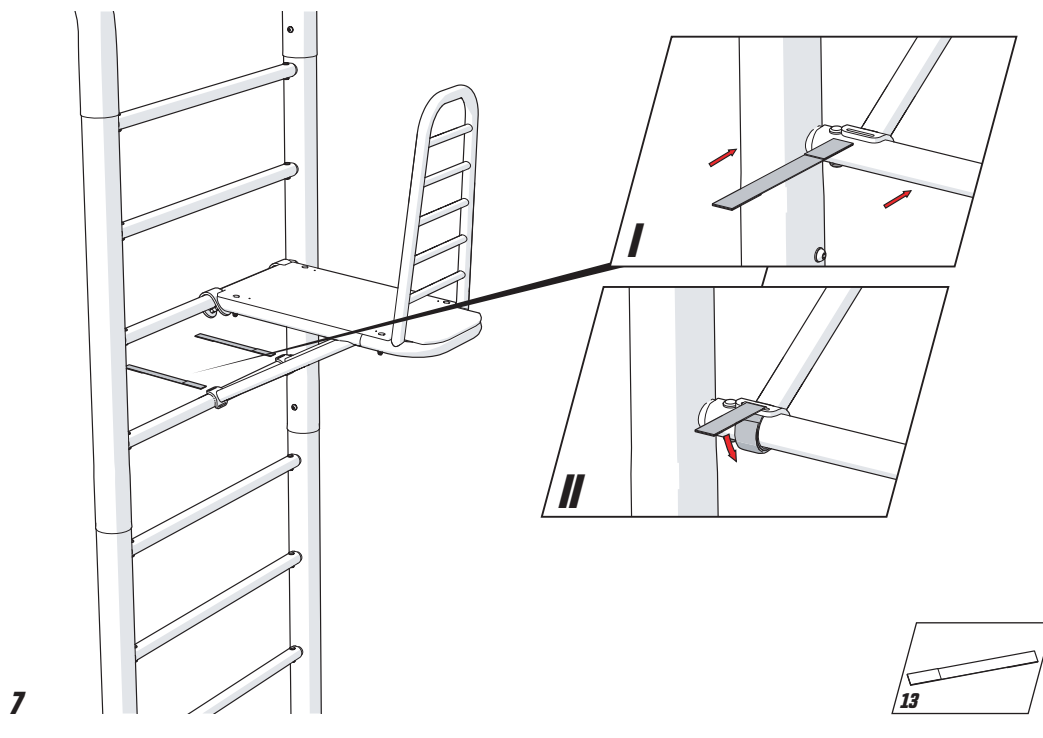
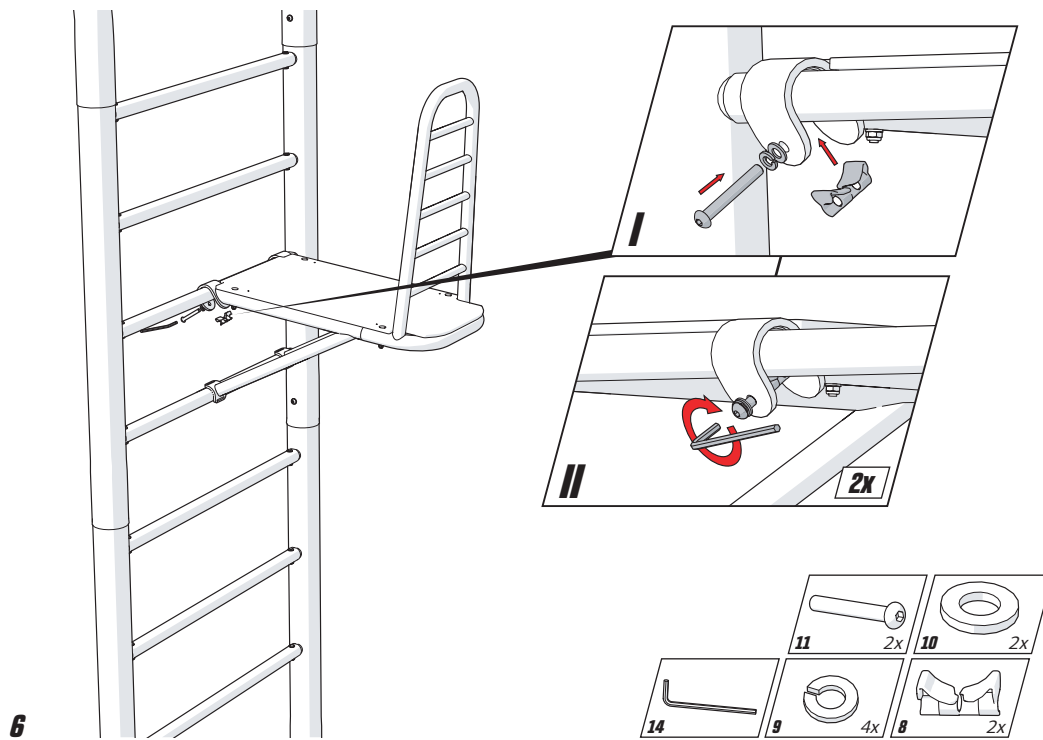


INSTALLATION



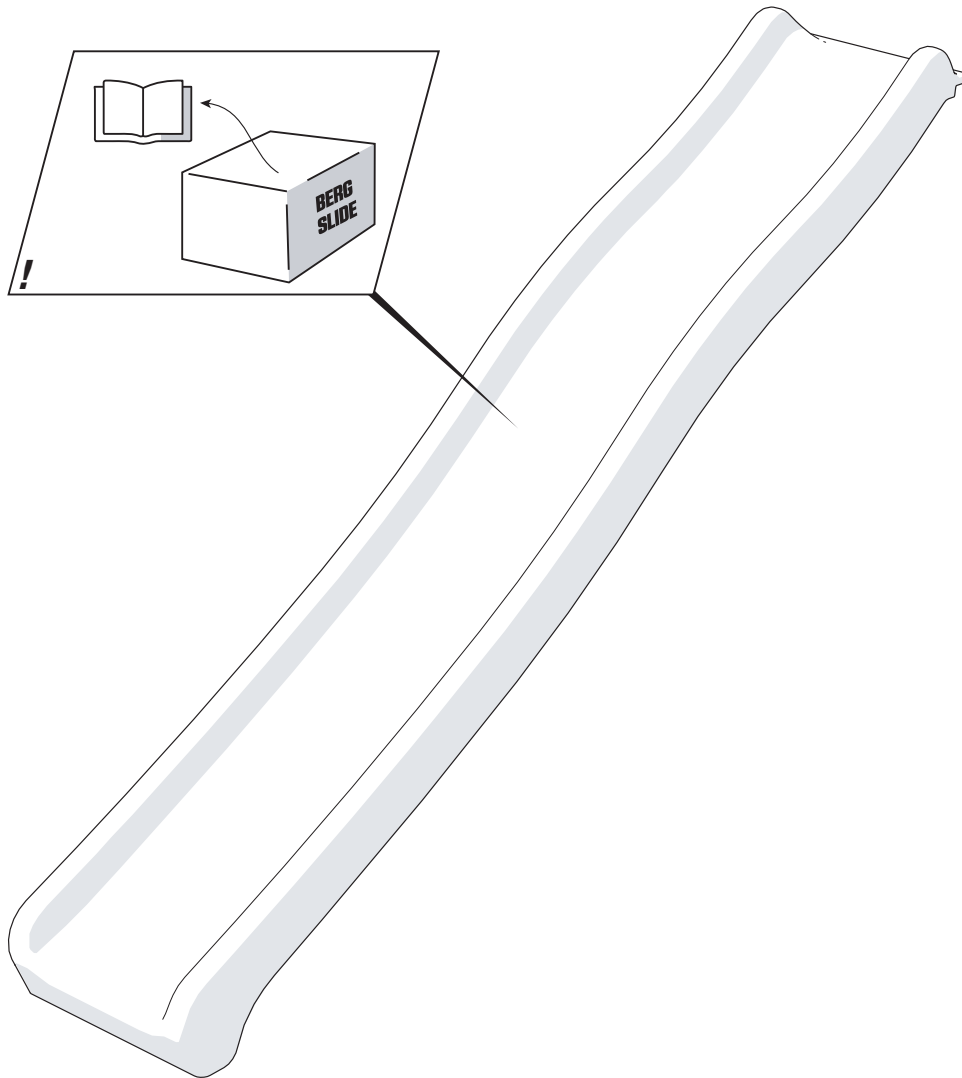
ON

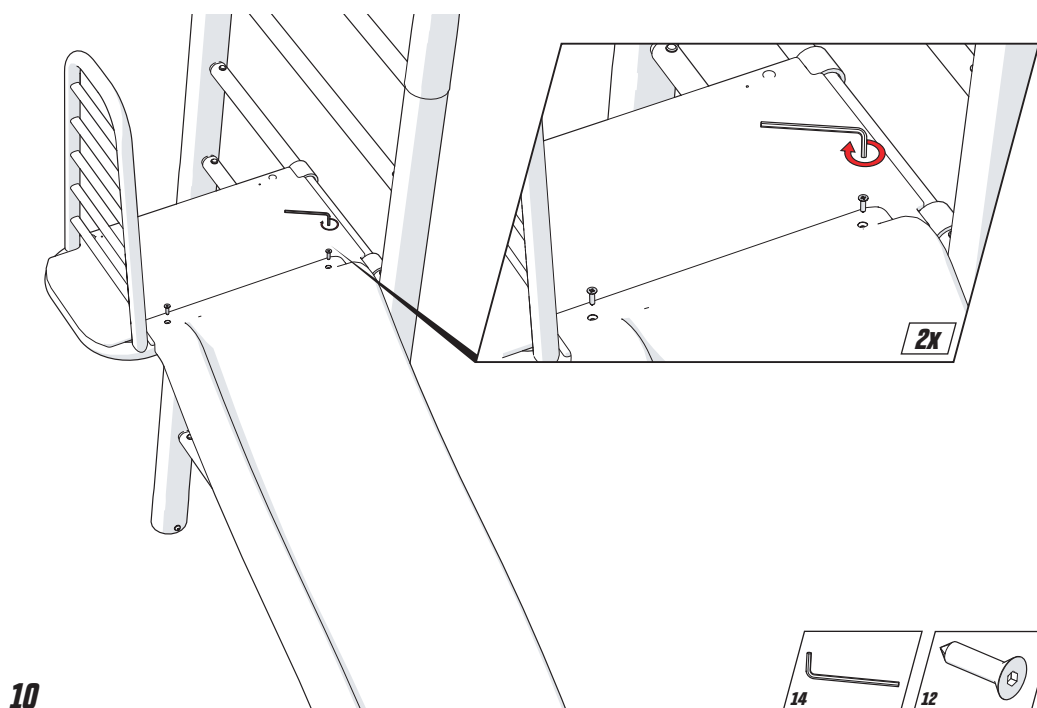
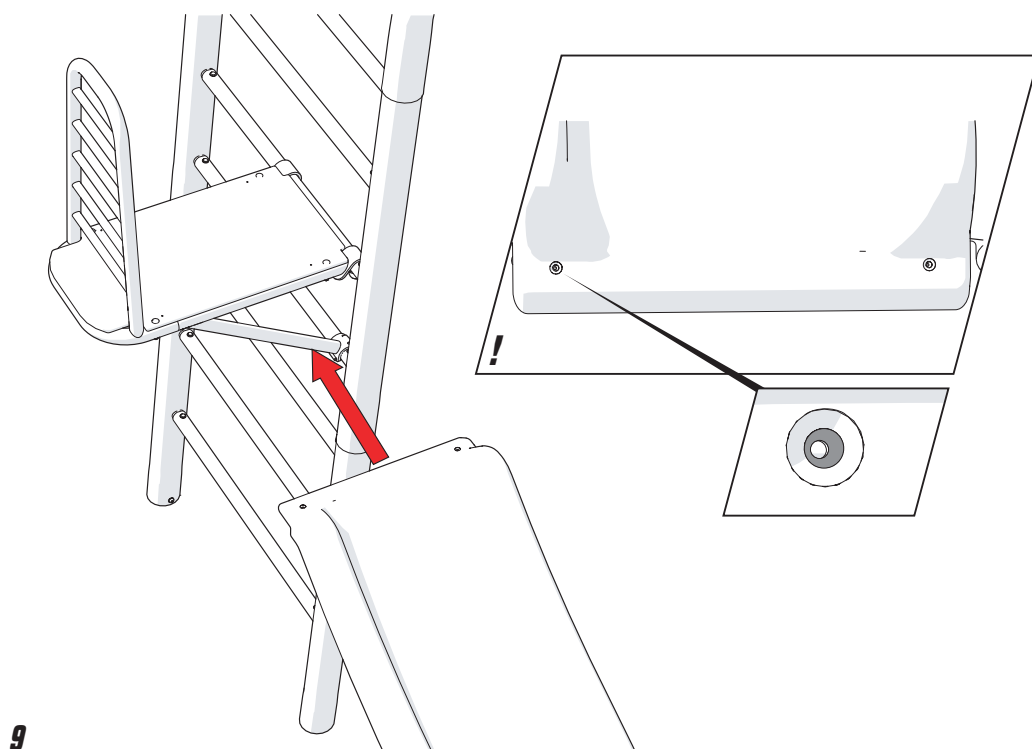




ASSEMBLE SLIDE

Using the manual in the box of the slide







ENGLISH

Warnings

- This accessory is only suitable for assembly on the PlayBase Frame. Always read the PlayBase frame manual in combination with this manual.
- This accessory is only suitable for assembly on the ladder side frame.
- Read instructions prior to first use and keep for future reference!
- Not suitable for children under 36 months.
- Falling hazard - Platform height of 150 cm.
- It is prohibited to climb over the frame when the slide is attached.
- It is prohibited to mount an accessory with long ropes (e.g. swing, trapeze, etc.) next to the slide due to possible strangulation hazard.
- Install the slide on a level and shock absorbing surface, at least 2 metres from any obstruction such as a fence or laundry lines.
- The slide shall not be installed over concrete, asphalt or any other hard surface.
- Adult assembly required.
- The maximum user weight is: 70 kg.
- For domestic use only.
- For outdoor use only.
- Adult supervision required.
- Position the slide in a way that it is not oriented directly towards full exposure from the sun.
- The product can become hot in direct sunlight, be careful.
- Keep fire and other heat sources away from the product.
- For general instructions of this accessory in combination with the PlayBase frame see the PlayBase frame manual.

BERG or the dealer cannot be held responsible for improper use of this product. For safety reasons, unless BERG-approved, modifications or changes to the product are prohibited.

Only use this product as instructed in this manual. Any unauthorized use could result in serious injury to the user or damage the product.

Inspection and maintenance

To ensure the safety of the users of the product, the product has to be subjected to the safety inspections and maintenance instructions mentioned below. If not carried out regularly the product could become a hazard.

- There must be no objects / sharp objects on the floor underneath the unit and in the movement area.
- Check attachments for evidence of deterioration.
- Check all nuts and bolts for tightness and tighten when needed.
- When the product is not used for a longer period of time (e.g. during winter), we recommend storing the product in a dry place for a longer product life.
- Missing or worn components must be replaced or repaired immediately.
- Replace defective parts in accordance with the manufacturers' instructions.
- Any worn or replaced parts must be disposed according local guidelines. Pay attention to the environment.

Warranty

Inappropriate use or faulty application of the product is explicitly forbidden and absolves the manufacturer of all liability. Modifications made by the customer to the original product (for example the adding of an accessory) shall be carried out according the instructions of the manufacturer.

The owner of this BERG product has the following warranty on this product:

- The product has a warranty of 3 years from the date of purchase.
- Parts that are liable to wear and tear and influences of weather are excluded from warranty.
- Check www.berg.com for extensive warranty regulations.

	Before each use	Monthly	Beginning of each season
Screws, nuts and bolts	Check for visible damage	Check if connections are tight and tighten them if needed	Inspect the frame connections thoroughly
Platform and slide	Check condition	Check for wear and tear and replace if needed	Check for wear and tear and replace if needed

LET'S GO!



www.bergtoys.com

BT23-01675 | Rev: 0

Place Batch Number Sticker Here

